



DEALER CATALOG - 2020

INDEX—1

FORKS

- FORKS OVERVIEW	Page 6
- ITA CLASS II	Page 7
- ITA CLASS III & IV	Page 8
- FULL TAPER	Page 9
- PIN-TYPE	Page 10

FORK EXTENSIONS

- STANDARD EXTENSIONS OVERVIEW	Page 11
- STANDARD EXTENSIONS	Page 12
- HEAVY DUTY EXTENSIONS OVERVIEW	Page 13
- HEAVY DUTY EXTENSIONS	Page 14
- HD EXTENSIONS (LIFT LUGS)	Page 15
- EXTRA HEAVY DUTY CUSTOM EXTENSIONS	Page 16

FORK PROTECTION

- NYLON FORK SLEEVES (COVERS)	Page 17
- FORK SLEEVES (COVERS) DATA SHEET	Page 18
- POLY COATED FORK SLEEVES	Page 19
- POLY COATED FORK EXTENSIONS	Page 20
- RUBBER-TIPPED FORK SLEEVES	Page 20
- FORK HATS (SHANK TOP COVERS)	Page 20
- FACE MASK MAGNETIC COVERS	Page 21

ROLLER FORKS	Page 22
---------------------	---------

HEAVY DUTY SIDESHIFTERS	Page 23
--------------------------------	---------

LOAD BACKREST	Page 24
----------------------	---------

FORK POSITIONERS

- FORK POSITIONER (NON-SIDESHIFTING)	Page 25
- FORK POSITIONER (SIDESHIFTING)	Page 26
- HOOK TO PIN SIDESHIFTING POSITIONER	Page 27
- ROTATING FORK POSITIONER	Page 28
- FORK POSITIONER KITS (RETRO-FIT)	Page 29
- DOUBLE WIDE SIDESHIFTER CARRIAGES	Page 30
- SLOPE PILER WITH SIDESHIFT	Page 31

INDEX—2

MARBLE AND STONE SLAB HANDLING

- STONE BUNDLE HANDLER OVERVIEW	Page 32
- STONE BUNDLE EXTRACTOR	Page 33

PIPE HOLD DOWN CLAMPS

- WPH-AB PIPE CLAMP OVERVIEW -1	Page 34
- WPH-AB PIPE CLAMP OVERVIEW - 2	Page 35
- WPH-AB PIPE CLAMP TECHNICAL	Page 36
- WPH-PH PIPE CLAMP	Page 37
- WPH-SW-HD PIPE CLAMP OVERVIEW	Page 38
- WPH-SW-HD PIPE CLAMP TECHNICAL	Page 39
- WPH-FL PIPE CLAMP	Page 40
- PIPE HOLD DOWN CLAMP OPTIONS	Page 41

LOG AND POLE CLAMP (GRAPPLE)	Page 42
-------------------------------------	---------

END HOLD-DOWN CARRIAGES	Page 43
--------------------------------	---------

ROTATORS

- RDD SERIES ROTATOR OVERVIEW	Page 44
- RDD 45 & RDD 70 ROTATOR TECHNICAL	Page 45

STATIONARY LOAD INVERTER	Page 46
---------------------------------	---------

FORK FRAMES AND SPREADER BARS

- FRAME AND SPREADER OVERVIEW	Page 47
- FALSE FRAMES (HOOK-TYPE)	Page 48
- FORK MOUNTED SPREADER FRAMES	Page 49
- CARRIAGE MOUNTED SPREADER FRAMES	Page 50

BALE CLAMPS

- "D" SERIES BALE CLAMP OVERVIEW	Page 51
- "D" SERIES BALE CLAMP	Page 52
- ROTATING "D" SERIES BALE CLAMP	Page 53
- 16 UNIT PULP BALE CLAMP	Page 54

RIGID ARM & MULTIPURPOSE CLAMPS

- RIGID & MULTIPURPOSE CLAMP OVERVIEW	Page 55
- RIGID & MULTIPURPOSE CLAMP TECHNICAL	Page 56
- ROTATING MULTI-PURPOSE CLAMP OVERVIEW	Page 57
- ROTATING MULIT-PURPOSE CLAMP TECHNICAL	Page 58

INDEX—3

PALLET FORK & GAYLORD CLAMPS

- PALLET FORK CLAMP OVERVIEW	Page 59
- PALLET FORK CLAMP TECHNICAL	Page 60
- ROTATING PALLET FORK CLAMP	Page 61
- GAYLORD CLAMPS	Page 62
BLOCK AND BUILDING MATERIALS CLAMP	Page 63

DRUM HANDLING AND ATTACHMENTS

- SINGLE AND TWO DRUM CLAMPS (MANUAL)	Page 64
- VERTICAL DRUM LIFTERS	Page 64
- SINGLE AND TWO DRUM HANDLERS	Page 65
- DRUM ROTATORS	Page 65

SELF CLAMPING FORK JIBS	Page 66
--------------------------------	---------

CRANE HOOKS & CRANE BLADES	Page 67
---------------------------------------	---------

BOOMS, JIBS, HOOKS - FORK MOUNTED

- CRANE JIB SHORT & LONG	Page 68
- CRANE JIBS - TELESCOPING	Page 69
- CRANE BOOMS - TELESCOPING	Page 70
- CRANE HOOKS	Page 71
- HIGH-MOUNT JIBS	Page 71
- QUICK ATTACH TRUSS JIBS	Page 71

COIL RAMS & SLEEVES & CARPET POLES

- COIL RAMS - HOOK TYPE CARRIAGES	Page 72
- COIL RAMS - PIN-TYPE CARRIAGES	Page 73
- COIL RAMS - FORK MOUNTED UNDERSLUNG	Page 74
- COIL HANDLING FORK SLEEVES	Page 75
- CARPET POLES	Page 76

FORK MOUNTED LOADER BUCKET

- FORK MOUNTED LOADER BUCKET OVERVIEW	Page 77
- FORK MOUNTED LOADER BUCKET TECHNICAL	Page 78

TRAILER SPOTTER—FORK MOUNTED	Page 79
-------------------------------------	---------

WORK PLATFORMS	Page 80
-----------------------	---------

CONTAINER RAMPS	Page 81
------------------------	---------

INDEX—4

SKID STEER CARRIAGES	Page 82
BIN TIPPERS	Page 83
HOOKS & LATCHES	
- UPPER AND LOWER ITA HOOKS	Page 84
- ITA FORK LATCH KITS	Page 84
- SAFETY CARGO HOOKS	Page 84
SIDESHIFT BEARINGS	
- BEARING CROSSOVER GUIDE	Page 85
- BEARING IDENTIFICATION GUIDE	Page 86
CLAMP ARM SLIDE BEARINGS	
- CLAMP ARM BEARING CROSSOVER GUIDE	Page 87
PANA-VIEW SAFETY MIRROR	Page 88

OUR COMMITMENT TO QUALITY AND SATISFACTION

FORK-CO Commits to stand behind its customers and products, 100%, without question. Our objective is to build lifelong relationships with our customers. When you choose FORK-CO, you are choosing an absolute guarantee that you and your customer will be taken care of, it's just simply not negotiable for us.

BEST IN INDUSTRY LEAD TIMES

With FORK-CO you will never have to wait 16-18 weeks for your custom attachment. We work very hard to ensure that our lead time average is 4-5 weeks, even on the most complex assemblies. If you need it faster, just let us know. We will do whatever it takes to meet your timeline.

NOTHING TOO SIMPLE OR TOO COMPLEX

If you don't see it in this catalog, don't hesitate to call. Our customer know we can design, engineer, and fabricate whatever you can imagine. The trial and error is on us, when you commit to a project with FORK-CO, you are buying a finished functioning product that meets your expectations.

FORKS



FORK-CO stocks standard ITA / FEM Forks in Class II, III, and IV in our warehousing and manufacturing facility in Alvin, TX.

Stock lengths from 32 inches up to 120 inches in most section sizes and classes.

Full Tapered and Polished Forks are stocked in Class II and Class IV.

Fork-Co can help you identify the correct fork for your application. We welcome your calls and questions.

We make pin type forks here in Alvin, and can customize and supply specialty forks.



All our forks are forged, shot-blasted, machined back, sides and tapers and are guaranteed to be level at the tips within ISO standards. All Fork-Co ITA/FEM class Forks are high yield heat treated alloy steel, ASTM 4140 or 4340. Our larger pin-type (tube) forks are 15B37 very high yield steel. All of our forks undergo individual magnetic powder crack checking.

Common Stock Classes and Sizes are detailed in the next few pages.

For Pin-Type (Tube Type) Forks, please use the included specification sheet to describe the indicated critical dimensions. Submit for quote by email to info@fork-co.com or fax to (281) 692-1450.

STANDARD CLASS II ITA/FEM HOOK-TYPE FORKS

Class	Fork-Co PN	Thickness	Width	Length	Capacity (24" LC)
2	2-125430ST	1.25"	4"	30"	3,700 lbs / Pair
2	2-125436ST	1.25"	4"	36"	3,700 lbs / Pair
2	2-125442ST	1.25"	4"	42"	3,700 lbs / Pair
2	2-125448ST	1.25"	4"	48"	3,700 lbs / Pair
2	2-125454ST	1.25"	4"	54"	3,700 lbs / Pair
2	2-125460ST	1.25"	4"	60"	3,700 lbs / Pair
Class	Fork-Co PN	Thickness	Width	Length	Capacity (24" LC)
2	2-138448ST	1.38"	4"	48"	
Class	Fork-Co PN	Thickness	Width	Length	Capacity (24" LC)
2	2-150432ST	1.50"	4"	32"	5,500 lbs / Pair
2	2-150436ST	1.50"	4"	36"	5,500 lbs / Pair
2	2-150442ST	1.50"	4"	42"	5,500 lbs / Pair
2	2-150448ST	1.50"	4"	48"	5,500 lbs / Pair
2	2-150454ST	1.50"	4"	54"	5,500 lbs / Pair
2	2-150460ST	1.50"	4"	60"	5,500 lbs / Pair
Class	Fork-Co PN	Thickness	Width	Length	Capacity (24" LC)
2	2-150532ST	1.50"	5"	32"	6,400 lbs / Pair
2	2-150536ST	1.50"	5"	36"	6,400 lbs / Pair
2	2-150542ST	1.50"	5"	42"	6,400 lbs / Pair
2	2-150548ST	1.50"	5"	48"	6,400 lbs / Pair
2	2-150554ST	1.50"	5"	54"	6,400 lbs / Pair
2	2-150560ST	1.50"	5"	60"	6,400 lbs / Pair
2	2-150572ST	1.50"	5"	72"	6,400 lbs / Pair
Class	Fork-Co PN	Thickness	Width	Length	Capacity (24" LC)
2	2-175436ST	1.75"	4"	36"	6,800 lbs / Pair
2	2-175442ST	1.75"	4"	42"	6,800 lbs / Pair
2	2-175448ST	1.75"	4"	48"	6,800 lbs / Pair
2	2-175454ST	1.75"	4"	54"	6,800 lbs / Pair
2	2-175460ST	1.75"	4"	60"	6,800 lbs / Pair
2	2-175472ST	1.75"	4"	72"	6,800 lbs / Pair
2	2-175484ST	1.75"	4"	84"	6,800 lbs / Pair
2	2-175496ST	1.75"	4"	96"	6,800 lbs / Pair
Class	Fork-Co PN	Thickness	Width	Length	Capacity (24" LC)
2	2-175536ST	1.75"	5"	36"	8,200 lbs / Pair
2	2-175542ST	1.75"	5"	42"	8,200 lbs / Pair
2	2-175548ST	1.75"	5"	48"	8,200 lbs / Pair
2	2-175554ST	1.75"	5"	54"	8,200 lbs / Pair
2	2-175560ST	1.75"	5"	60"	8,200 lbs / Pair
2	2-175572ST	1.75"	5"	72"	8,200 lbs / Pair
2	2-175596ST	1.75"	5"	96"	8,200 lbs / Pair

Consider this a representative sample of commonly stocked fork sizes, Fork-Co keeps many additional variants on hand. Fork-Co also keeps Specialty Forks and can Customize any item to your specifications in our fabrication facility.

STANDARD CLASS III & IV ITA/FEM HOOK-TYPE

Class	Fork-Co PN	Thickness	Width	Length	Capacity (24" LC)
3	3-175536ST	1.75"	5"	36"	8,200 lbs / Pair
3	3-175542ST	1.75"	5"	42"	8,200 lbs / Pair
3	3-175548ST	1.75"	5"	48"	8,200 lbs / Pair
3	3-175554ST	1.75"	5"	54"	8,200 lbs / Pair
3	3-175560ST	1.75"	5"	60"	8,200 lbs / Pair
3	3-175572ST	1.75"	5"	72"	8,200 lbs / Pair
3	3-175584ST	1.75"	5"	84"	8,200 lbs / Pair
3	3-175596ST	1.75"	5"	96"	8,200 lbs / Pair
Class	Fork-Co PN	Thickness	Width	Length	Capacity (24" LC)
3	3-200548ST	2.00"	5"	48"	10,200 lbs / Pair
3	3-200554ST	2.00"	5"	54"	10,200 lbs / Pair
3	3-200560ST	2.00"	5"	60"	10,200 lbs / Pair
3	3-200572ST	2.00"	5"	72"	10,200 lbs / Pair
3	3-200596ST	2.00"	5"	96"	10,200 lbs / Pair
Class	Fork-Co PN	Thickness	Width	Length	Capacity (24" LC)
3	3-200642ST	2.00"	6"	42"	12,600 lbs / Pair
3	3-200648ST	2.00"	6"	48"	12,600 lbs / Pair
3	3-200654ST	2.00"	6"	54"	12,600 lbs / Pair
3	3-200660ST	2.00"	6"	60"	12,600 lbs / Pair
3	3-200672ST	2.00"	6"	72"	12,600 lbs / Pair
3	3-200696ST	2.00"	6"	96"	12,600 lbs / Pair
3	3-2006120ST	2.00"	6"	120"	12,600 lbs / Pair
Class	Fork-Co PN	Thickness	Width	Length	Capacity (24" LC)
4	4-200642ST	2.00"	6"	42"	12,600 lbs / Pair
4	4-200648ST	2.00"	6"	48"	12,600 lbs / Pair
4	4-200654ST	2.00"	6"	54"	12,600 lbs / Pair
4	4-200660ST	2.00"	6"	60"	12,600 lbs / Pair
4	4-200672ST	2.00"	6"	72"	12,600 lbs / Pair
4	4-200684ST	2.00"	6"	84"	12,600 lbs / Pair
4	4-200696ST	2.00"	6"	96"	12,600 lbs / Pair
Class	Fork-Co PN	Thickness	Width	Length	Capacity (24" LC)
4	4-250642ST	2.50"	6"	42"	21,400 lbs / Pair
4	4-250648ST	2.50"	6"	48"	21,400 lbs / Pair
4	4-250654ST	2.50"	6"	54"	21,400 lbs / Pair
4	4-250660ST	2.50"	6"	60"	21,400 lbs / Pair
4	4-250672ST	2.50"	6"	72"	21,400 lbs / Pair
4	4-250684ST	2.50"	6"	84"	21,400 lbs / Pair
4	4-250696ST	2.50"	6"	96"	21,400 lbs / Pair
4	4-2506120ST	2.50"	6"	120"	21,400 lbs / Pair

Consider this a representative sample of commonly stocked fork sizes, Fork-Co keeps many additional variants on hand. Fork-Co also keeps Specialty Forks and can Customize any item to your specifications in our fabrication facility.

CLASS II, III, IV FULL TAPER LUMBER FORKS

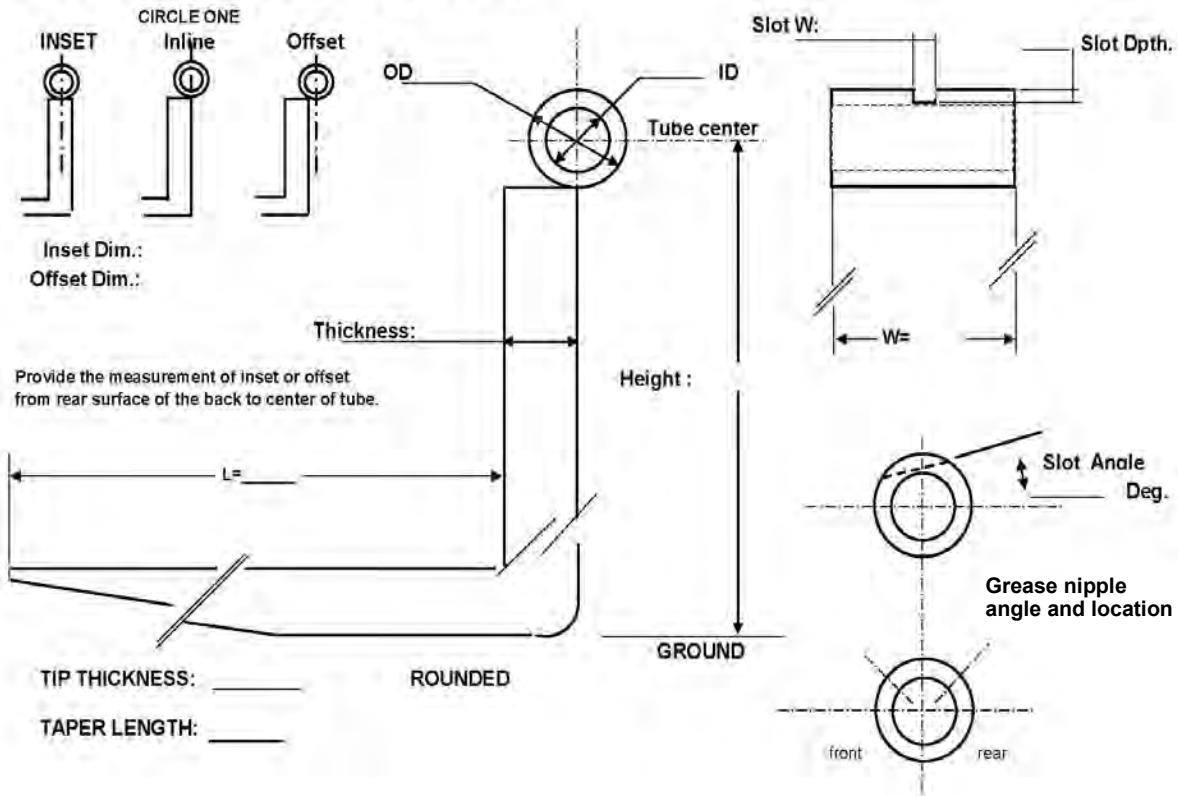
Class	Fork-Co PN	Thickness	Width	Length	Capacity (24" LC)
2	2-150648FT	1.50"	6"	48"	5,500 lbs / Pair
3	3-150742FT	1.50"	7"	42"	7,500 lbs / Pair
3	3-150748FT	1.50"	7"	48"	7,500 lbs / Pair
3	3-150848FT	1.50"	8"	48"	9000 lbs / Pair
4	4-1501048FT	1.50"	10"	48"	13,000 lbs / Pair
4	4-1501248FT	1.50"	12"	48"	16,000 lbs / Pair

Consider this a representative sample of commonly stocked fork sizes, Fork-Co keeps many additional variants on hand. Fork-Co also keeps Specialty Forks and can Customize any item to your specifications in our fabrication facility.

PIN-TYPE FORKS



FORK PROFILE FOR PIN TYPE CARRIAGE



Name: _____ CO.: _____

ADDRESS: _____ CITY: _____ ST: _____ ZIP: _____

PH: _____ FX: _____

Forks are quoted and manufactured according to the dimensions provided to us. Pin-type forks are not standard sizes. Do not assume any of the above measurements. Careful measurement is critical. Please also note whether the truck is equipped with lower hooks and / or positioner anchors.

Fork-Co has the capability to produce pin-type forks for any size and capacity truck. For a quote, download this page and fill in the dimensions. Submit by email to info@fork-co.com Or fax to 281-692-1450.

STANDARD FORK EXTENSIONS

Fork Extensions are not all made the same. There are very important differences in shape, materials, construction and usability. Fork-Co USA offers standard extensions, HD fork sleeves, and custom fabricated extensions.



**FORK EXTENSIONS MUST NOT
EXCEED 50% OF FORK LENGTH**

- **Standard Series Fork Extensions have an open bottom and a closed loop heel strap. Installation is fast and easy.**
- **Made from alloy plate steel for strength.**
- **Side walls are formed with the grain of the steel to ensure maximum rigidity.**
- **Tapers are 12 inches long.**
- **Large loops make for easy installation**
- **CAPACITY RATINGS:**
Fork extensions are capacity rated per fork and this rating is stamped on the data plate or into the steel itself.

They are rated at the capacity of the installed maximum fork size at a load center that is 50% of the extension length. Thus, an extension 72" long for a fork 1.75" x 5" x 48" is to be stamped: 2750x36
- **Fork extensions are rated as having the load uniformly distributed over their length.**
- **DO NOT tip load the standard fork extension. They are not designed for tip loading or prying. Use other purpose-built attachments for such operations.**

Heavy Duty Full Boxed Extensions also available.

STANDARD FORK EXTENSIONS



FORK EXTENSIONS MUST NOT EXTEND MORE THAN 50% OF FORK LENGTH

Model	Fork Width	Fork Thickness	Extension Length	Weight (Pair)
FE112-48	4"	1.25" - 2"	48"	49 lbs
FE112-54	4"	1.25" - 2"	54"	52 lbs
FE112-60	4"	1.25" - 2"	60"	55 lbs
FE112-63	4"	1.25" - 2"	63"	64 lbs
FE112-72	4"	1.25" - 2"	72"	73 lbs
FE112-84	4"	1.25" - 2"	84"	89 lbs
FE112-90	4"	1.25" - 2"	90"	96 lbs
FE112-96	4"	1.25" - 2"	96"	103 lbs
Model	Fork Width	Fork Thickness	Extension Length	Weight (Pair)
FE140-48	5"	1.5" - 2"	48"	71 lbs
FE140-54	5"	1.5" - 2"	54"	79 lbs
FE140-60	5"	1.5" - 2"	60"	89 lbs
FE140-63	5"	1.5" - 2"	63"	100 lbs
FE140-72	5"	1.5" - 2"	72"	115 lbs
FE140-84	5"	1.5" - 2"	84"	133 lbs
FE140-90	5"	1.5" - 2"	90"	145 lbs
FE140-96	5"	1.5" - 2"	96"	151 lbs
Model	Fork Width	Fork Thickness	Extension Length	Weight (Pair)
FE165-48	6"	1.75" - 2.5"	48"	87 lbs
FE165-54	6"	1.75" - 2.5"	54"	96 lbs
FE165-60	6"	1.75" - 2.5"	60"	109 lbs
FE165-63	6"	1.75" - 2.5"	63"	111 lbs
FE165-72	6"	1.75" - 2.5"	72"	132 lbs
FE165-84	6"	1.75" - 2.5"	84"	154 lbs
FE164-90	6"	1.75" - 2.5"	90"	169 lbs
FE165-96	6"	1.75" - 2.5"	96"	176 lbs

HEAVY DUTY FORK EXTENSIONS

Fork Extensions are not all made the same. There are very important differences in shape, materials, construction and usability. Fork-Co USA offers standard extensions, HD fork sleeves, and custom fabricated extensions.



FORK EXTENSIONS MUST NOT EXCEED 50% OF FORK LENGTH

- **HD Series Fork Extensions are full box steel construction with heel pins for retention.**
- **Made from alloy plate steel for strength with zinc finish.**
- **Tapers are 12 inches long.**
- **Heel Straps and Locking Pins for Retention**
- **CAPACITY RATINGS:**
Fork extensions are capacity rated per fork and this rating is stamped on the data plate or into the steel itself.

They are rated at the capacity of the installed maximum fork size at a load center that is 50% of the extension length. Thus, an extension 72" long for a fork 1.75" x 5" x 48" is to be stamped: 2750x36
- **Fork extensions are rated as having the load uniformly distributed over their length.**



HEAVY DUTY SLEEVE FORK EXTENSIONS

Capacity rated tubular fork extensions

MODEL	Ext. Length	Fork Width	Fork Thickness	Weight (Pair)
FE1-16	63"	4"	1.75"	110 lbs
FE1-18	72"	4"	1.75"	126 lbs
FE1-21	84"	4"	1.75"	134 lbs
FE1-24	96"	4"	1.75"	165 lbs
FE1-30	120"	4"	1.75"	119 lbs
MODEL	Ext. Length	Fork Width	Fork Thickness	Weight (Pair)
FE2-16	63"	5"	2"	130 lbs
FE2-18	72"	5"	2"	150 lbs
FE2-21	84"	5"	2"	170 lbs
FE2-24	96"	5"	2"	194 lbs
FE2-30	120"	5"	2"	245 lbs
MODEL	Ext. Length	Fork Width	Fork Thickness	Weight (Pair)
FE3-16	63"	6"	2"	200 lbs
FE3-18	72"	6"	2"	224 lbs
FE3-21	84"	6"	2"	262 lbs
FE3-24	96"	6"	2"	300 lbs
FE3-30	120"	6"	2"	379 lbs
FE4-16	63"	6"	2.5"	245 lbs
FE4-18	72"	6"	2.5"	293 lbs
FE4-21	84"	6"	2.5"	341 lbs
FE4-24	96"	6"	2.5"	390 lbs
FE4-30	120"	6"	2.5"	486 lbs

HD SLEEVE CAPACITY CHART

MODEL	Load Center				
	24"	48"	60"	72"	96"
FE1-30	2,730 lbs	1,364 lbs	1,091 lbs	894 lbs	671 lbs
FE2-30	4,960 lbs	2,480 lbs	1,984 lbs	1,626 lbs	1,220 lbs
FE3-30	7,165 lbs	3,583 lbs	2,866 lbs	2,349 lbs	1,762 lbs
FE4-30	9,370 lbs	4,685 lbs	3,748 lbs	3,072 lbs	2,304 lbs

The capacities shown are for each fork given in pounds & assumed installed on a 48" long fork of maximum fit @ load centers along the fork sleeves. I.E: On a 48" fork, a 120 inch FE1-30 provides 671 LB on each fork at 96" load center. Other sleeve lengths can be extrapolated.

HEAVY DUTY SLEEVE FORKS WITH LIFTING ADAPTERS

- **SLEEVE FORKS WITH LIFTING ADAPTERS** are fork sleeves specially modified with our exclusive "GOAL POST" strap and chain attachment points.
- The posts are gapped to allow grabbing chain links between them.
- The posts permit easy chain length adjustment.
- Cargo straps can also be used on this device. the posts are tall enough to secure strap loops.
- The sleeves are securely retained by self-locking pins inserted behind the fork heels.
- These handy lifting tools are available in many lengths and fork sizes.
- Five goal posts are arranged on each sleeve. More can be added as needed.



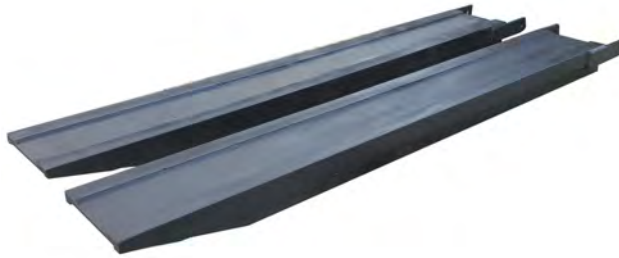
Applications:

- Lift stone slab bundles
- Unload, load containers
- Move machinery or motors and pumps
- Handle pipe , rounds or beams end-wise
- Move and position long crates such as glass or ceramic components



Available custom designed to your specifications.

EXTRA-HEAVY DUTY CUSTOM EXTENSIONS



- **Application-rated for handling extreme loads.**
- **Designed and Fabricated for your specific lift and load.**
- **Designed to withstand tip loading and point loads.**
- **Pin-locked at the heel of the fork, they are easily installed and removed.**



NOTE: These sleeves increase the truck fork's width and thickness.

Available custom designed to your specifications.

FORK COVERS NYLON OR POLYPROPYLENE HEAVY WEBBING



- **Designed to protect loads that can be marred, dented, scratched or scuffed by the bare fork blades and backs.**
- **Made from very heavy Nylon™ or polypropylene cargo webbing , they are long-wearing and tough enough for any job.**
- **Options include: Black Neoprene or White Rubber can be sewn on the top surface of the blade. This option provides additional friction for slippery load surfaces.**
- **Built to order for any fork size, any back height and any blade configuration.**



- **Multi-laminated top and bottom layers.**
- **Tips are re-enforced double thickness with rubber liner.**
- **Easy on and off. strapped around the front and sides.**
- **Protects All Sides.**



**Specific Dimensions need for pricing and fabrication.
See quote / order form on page 16.**

Available custom designed to your specifications.

FORK-COVERS QUOTE AND ORDER FORM

NAME: _____ COMPANY: _____

ADDRESS: _____

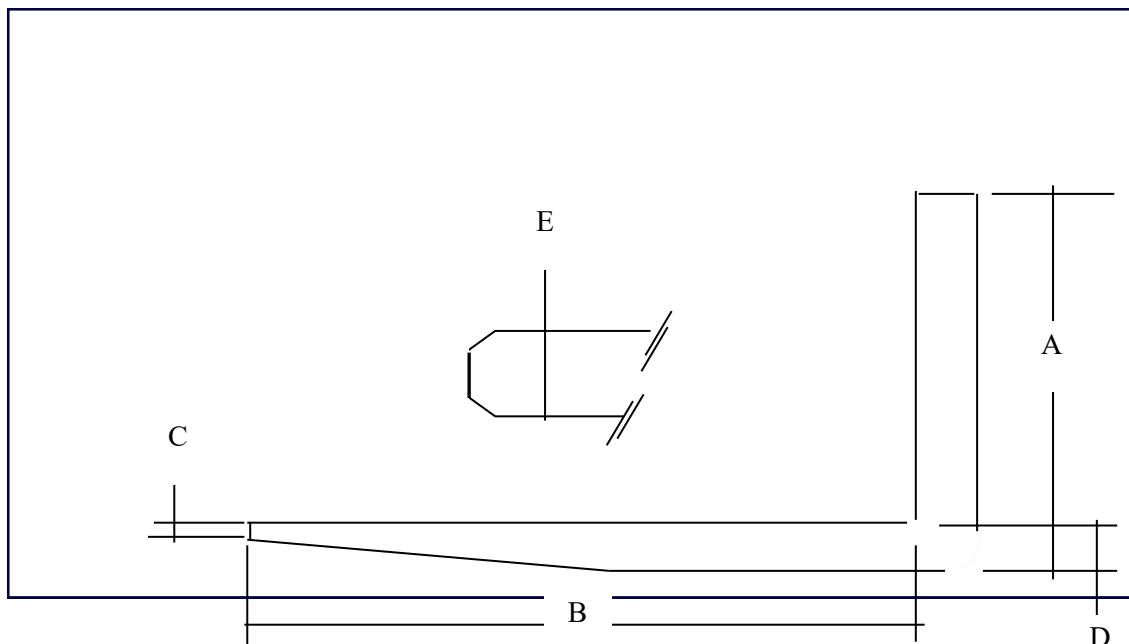
CITY: _____ ST: _____ ZIP: _____

PH: _____ FX: _____

E-MAIL: _____

Required Dimensions:

- A. _____ Back Height
- B. _____ Length
- C. _____ Tip Thickness
- D. _____ Fork Thickness
- E. _____ Fork Width



Email to info@fork-co.com or fax to (281) 692-1450

Available custom designed to your specifications.

POLYURETHANE FORK SLEEVES

**DURABLE AND
LONG-LASTING PROTECTION
FOR PRODUCTS SUBJECT TO
SURFACE DAMAGE.**

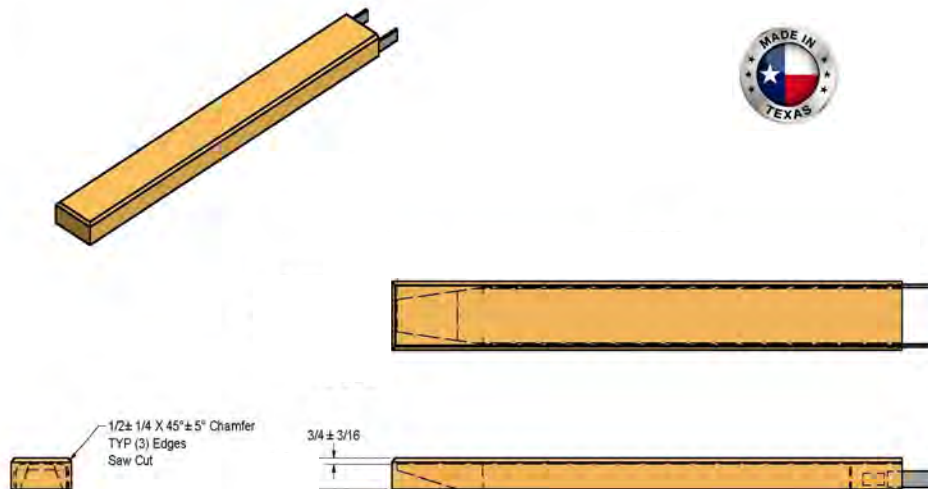
**EASY TO INSTALL AND
SECURE TO THE FORK.**

**CAN BE POLY-COATED ON
FOUR OR ALL FIVE FACES**

BUILT TO ORDER



- **POLY FORK SLEEVES ARE WELDED STEEL BOX-SECTION FORK SLEEVES COATED WITH THICK, HIGH DUROMETER, VERY TOUGH POLYURETHANE.**
- **Uses include handling stainless steel, galvanized materials, painted, epoxy coated, plastics and finished wood products. When the fork corners, tips or steel blades are the problem, Fork-Co's poly fork sleeves are the solution.**
- **Extremely durable, lasting much longer than vinyl or fabric style covers. Proven to give years of heavy duty service**
- **Installation is by forklift entry. Drive the forks into the rear openings.**
- **Security to the fork is assured, using self-locking pins to engage behind the fork heels.**
- **The steel inner sleeve is built to order to fit the host's forks closely.**



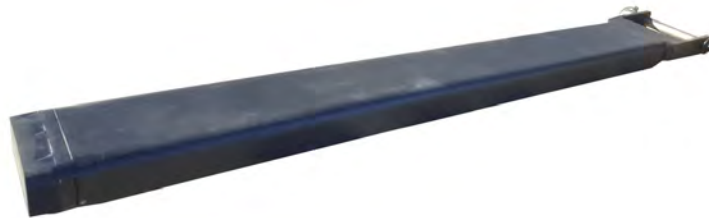
**POLY FORK SLEEVES ARE BUILT TO MATCH THE FORKLIFT APPLICATION.
The forks determine the size, of course, so each pair is made to match your forks.**

POLY-COATED FORK EXTENSIONS

Steel fork covers designed to cover the TOP AND TIP of steel fork blades with a high-durometer coating of polyurethane. Thicknesses can be varied as needed. Use these tough covers to protect stainless steel, tubing, wire coils, sheet metal, fiberglass, painted surfaces, etc. Anything that can be scratched can be protected by our POLY-COATED FORK Covers.



RUBBER-TIPPED FORK SLEEVES



- Fork sleeves with a replaceable rubber bumper at the tip.
- Used in work where the fork may extend beyond the load, causing damage to adjacent loads.
- A steel strap keeps the sleeve from raising upward and a pin locks it behind the heel of the fork.
- Rubber tipped bumper forks are built to match the original fork dimensions.



FORK HATS

- Built to cover the tops of the fork shanks.
- Prevent sharp-cornered forks from damaging super-sacks.
- Built to order to fit your forks.



Available custom designed to your specifications.

FACE-MASK MAGNETIC POLY FORK PROTECTION

Face-Mask magnetic poly fork protectors are made with powerful magnetic backings.

These long-lasting pads are designed to keep the carbon steel of the forks away from delicate surfaces.

Face-Masks are designed to be installed onto the fork back . They provide a thin profile with very good adhesion and lateral retention.

They can be made to fit any fork size. They are ideal for forks handling stainless, coated and soft materials. The blade protectors cover the tops and the leading tip of the fork.

They are installed and removed safely using jack screws provided with the Face-Mask. Alignment is easy.

This product is another in our broad line of fork protection products.

Contact Fork-Co for more information and ask for a quote.

**MAGNETIC STEEL BACKING WITH
85 DURO SHORE A
POLYURETHANE BONDED TO THE
FACE.**

MADE IN TEXAS, USA



Available custom designed to your specifications.



ROLLER FORKS FOR CARGO LOADING



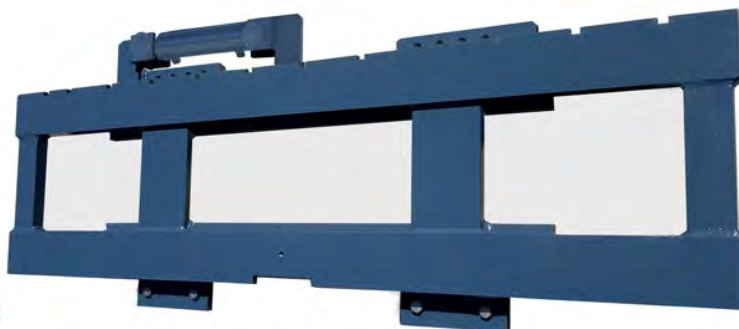
- **ROLLER FORKS FOR CARGO LOADING** are used to load pallets of cargo into aircraft having roller bed floors.
- They are built to match the fork size used and the fork spacing as desired by the user.
- All-steel construction using heavy duty conveyor rollers, these tough accessories are made for the fast, tough work performed by freight forwarders and our military.
- Easily installed and removed. Secured to the fork using self-locking pins behind the fork heel.
- All rollers are self lubed, lifetime warranted and never need routine maintenance.
- **MADE IN TEXAS**



Available custom designed to your specifications.

HEAVY DUTY SIDESHIFTERS

- A:** Fork Spread Out to Out
B: Fork Spread In to In
C: Overall Width
HCG: Horizontal Center of Gravity
VCG: Vertical Center of Gravity
ET: Effective Thickness



All measurements are in inches. Forks are not included. Custom Sizes on Request.

Model	Required Carriage Width	Mounting Class	Total Sideshift	A	B	C	HCG	VCG	ET	Weight
5500 lbs. Attachment Capacity @ 24" LC. Class II Hook Type Mounting.										
SSAA-C38-55	35	II	8	35	0	38	1.5	11	2.5	225
SSAA-C40-55	35	II	8	37	0	40	1.5	11	2.5	235
SSAA-C43-55	35	II	8	40	0	43	1.5	11	2.5	250
SSAA-C46-55	41	II	8	43	0	46	1.5	11	2.5	265
SSAA-C52-55	41	II	8	49	0	52	1.6	11	2.5	300
SSAA-C62-55	48	II	8	59	0	62	1.6	11	2.5	345
10,000 lbs. Attachment Capacity @ 24" LC. Class III Hook Type Mounting.										
SSBB-C44-100	36	III	8	41	0	44	2.25	13.0	3.25	315
SSBB-C50-100	40	III	8	47	0	50	2.25	13.0	3.25	345
SSBB-C62-100	48	III	8	59	0	62	2.25	13.0	3.25	405
SSBB-C74-100	60	III	8	71	0	74	2.4	13.0	3.25	525
SSBB-C98-100	60	III	8	95	0	98	2.4	13.0	3.25	645
17,500 lbs. Attachment Capacity @ 24" LC. Class IV Hook Type Mounting.										
SSCC-C44-155	40	IV	8	41	0	44	2.7	18.0	4	585
SSCC-C50-155	40	IV	8	47	0	50	2.7	18.0	4	635
SSCC-C62-155	48	IV	8	59	0	62	2.7	18.0	4	735
SSCC-C74-155	60	IV	8	71	0	74	2.9	18.0	4	835
SSCC-C98-155	60	IV	8	95	0	98	2.9	18.0	4	1035

PIN-TYPE HEAVY DUTY SIDESHIFTERS ALSO AVAILABLE. CONSULT FORK-CO

Available custom designed to your specifications.

LOAD BACKREST - ALL CARRIAGE CLASSES



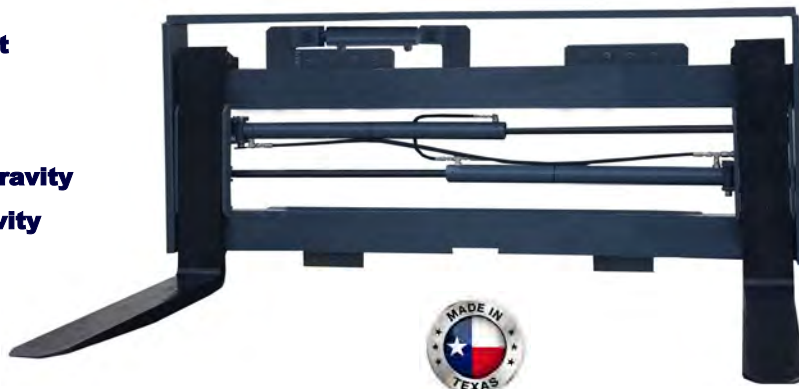
48 IN. HIGH LOAD BACKREST MODEL NO.	WEIGHT LB
2LBR-36-48	98
2LBR-40-48	103
2LBR-43-48	105
2LBR-47-48	110
3LBR-42-48	103
3LBR-44-48	107
3LBR-49-48	118
3LBR-53-48	126

- **Standard LBR is side bolted with two bolts per side.**
- **Available to fit any bolting pattern.**
- **Complies with ITSDF B56.1**
- **Optional LBR heights and widths are available. Consult Fork-Co.**
- **Consult the forklift manufacturer for the rated capacity of**

Available custom designed to your specifications.

FORK POSITIONERS (NON-SIDESHIFTING)

- A:** Fork Spread Out to Out
B: Fork Spread In to In
C: Overall Width
HCG: Horizontal Center of Gravity
VCG: Vertical Center of Gravity
ET: Effective Thickness



All measurements are in inches. Forks are not included. Custom Sizes on Request.

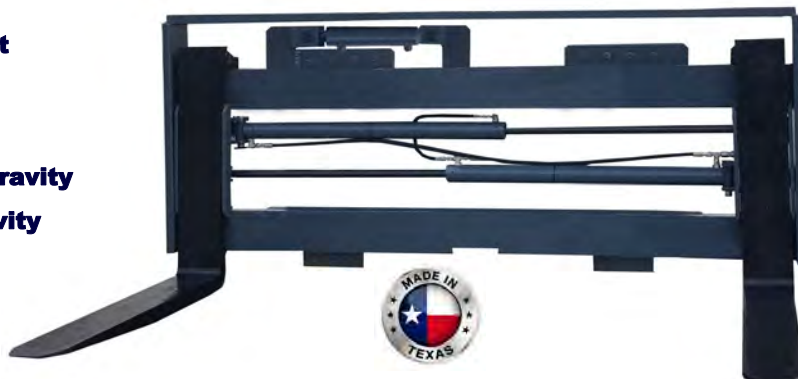
Model	Minimum Carriage Width	Mounting Class	Total Sideshift	A	B	C	HCG	VCG	ET	Weight (lbs)
5500 lbs. Attachment Capacity @ 24" LC. Class II Hook Type Mounting.										
FFAA-C38-55	35	II	0	35	3	38	1.5	11	2.5	310
FFAA-C40-55	35	II	0	37	3	40	1.5	11	2.5	320
FFAA-C43-55	35	II	0	40	3	43	1.5	11	2.5	330
FFAA-C46-55	41	II	0	43	3	46	1.5	11	2.5	345
FFAA-C52-55	41	II	0	49	3	52	1.6	11	2.5	385
FFAA-C62-55	48	II	0	59	3	62	1.6	11	2.5	425
10,000 lbs. Attachment Capacity @ 24" LC. Class III Hook Type Mounting.										
FFBB-C44-100	36	III	0	41	3	44	2.25	13.0	3.25	405
FFBB-C50-100	40	III	0	47	3	50	2.25	13.0	3.25	425
FFBB-C62-100	48	III	0	59	3	62	2.25	13.0	3.25	475
FFBB-C74-100	60	III	0	71	3	74	2.4	13.0	3.25	590
FFBB-C98-100	60	III	0	95	3	98	2.4	13.0	3.25	705
15,500 lbs. Attachment Capacity @ 24" LC. Class IV Hook Type Mounting.										
FFCC-C44-155	40	IV	0	41	4	44	2.1	18.0	4.25	670
FFCC-C50-155	40	IV	0	47	4	50	2.1	18.0	4.25	725
FFCC-C62-155	48	IV	0	59	4	62	2.1	18.0	4.25	890
FFCC-C74-155	60	IV	0	71	4	74	2.2	18.0	4.25	935
FFCC-C98-155	60	IV	0	95	4	98	2.2	18.0	4.25	1120

PIN-TYPE HEAVY DUTY MODELS ALSO AVAILABLE. CONSULT FORK-CO.

Available custom designed to your specifications.

FORK POSITIONERS (SIDESHIFTING)

- A:** Fork Spread Out to Out
B: Fork Spread In to In
C: Overall Width
HCG: Horizontal Center of Gravity
VCG: Vertical Center of Gravity
ET: Effective Thickness



All measurements are in inches. Forks are not included. Custom Sizes on Request.

Model	Minimum Carriage Width	Mounting Class	Total Sideshift	A	B	C	HCG	VCG	ET	Weight (lbs)
5500 lbs. Attachment Capacity @ 24" LC. Class II Hook Type Mounting.										
SFAA-C38-55	35	II	8	35	3	38	1.5	11	2.5	325
SFAA-C40-55	35	II	8	37	3	40	1.5	11	2.5	335
SFAA-C43-55	35	II	8	40	3	43	1.5	11	2.5	350
SFAA-C46-55	41	II	8	43	3	46	1.5	11	2.5	365
SFAA-C52-55	41	II	8	49	3	52	1.6	11	2.5	400
SFAA-C62-55	48	II	8	59	3	62	1.6	11	2.5	445
10,000 lbs. Attachment Capacity @ 24" LC. Class III Hook Type Mounting.										
SFBB-C44-100	36	III	8	41	3	44	2.25	13.0	3.25	425
SFBB-C50-100	40	III	8	47	3	50	2.25	13.0	3.25	465
SFBB-C62-100	48	III	8	59	3	62	2.25	13.0	3.25	515
SFBB-C74-100	60	III	8	71	3	74	2.4	13.0	3.25	635
SFBB-C98-100	60	III	8	95	3	98	2.4	13.0	3.25	755
15,500 lbs. Attachment Capacity @ 24" LC. Class IV Hook Type Mounting.										
SFCC-C44-155	40	IV	8	41	4	44	2.1	18.0	4.25	705
SFCC-C50-155	40	IV	8	47	4	50	2.1	18.0	4.25	755
SFCC-C62-155	48	IV	8	59	4	62	2.1	18.0	4.25	920
SFCC-C74-155	60	IV	8	71	4	74	2.2	18.0	4.25	965
SFCC-C98-155	60	IV	8	95	4	98	2.2	18.0	4.25	1150

PIN-TYPE HEAVY DUTY MODELS ALSO AVAILABLE. CONSULT FORK-CO.

Available custom designed to your specifications.

HOOK TO PIN SIDESHIFTING POSITIONERS

Hook-To-Pin Sideshifting Fork Positioners

MTCW: Minimum Truck Carriage Width



A: Fork Spread Out to Out
B: Fork Spread In to In
C: Overall Width
HCG: Horizontal Center of Gravity
VCG: Vertical Center of Gravity
ET: Effective Thickness



All measurements are in inches. Forks are not included.

Model Number	MTCW	Total SS	A	B	C	ET	HCG	VCG	Weight (lbs.)	Pin Dia.	Pin HT	Pin Inset
--------------	------	----------	---	---	---	----	-----	-----	---------------	----------	--------	-----------

5500 lbs. Attachment Capacity @ 24" LC. Class II Hook Type Mounting.

SFAP-38-55	35	8	34	3.5	38	2.9	2	14.4	300	1.75	21.0	0.0
SFAP-40-55	35	8	36	3.5	40	2.9	2	14.4	315	1.75	21.0	0.0
SFAP-43-55	35	8	39	3.5	43	2.9	2	14.4	340	1.75	21.0	0.0
SFAP-46-55	41	8	42	3.5	46	2.9	2	14.4	375	1.75	21.0	0.0
SFAP-52-55	41	8	48	3.5	52	2.9	2	14.4	425	1.75	21.0	0.0
SFAP-62-55	48	8	58	13.5	62	2.9	2	14.4	470	1.75	21.0	0.0

10,000 lbs. Attachment Capacity @ 24" LC. Class III Hook Type Mounting.

SFBP-44-100	36	8	40	4	44	2.9	2.1	15.1	425	2.0	25.5	0.5
SFBP-50-100	40	8	46	4	50	2.9	2.1	15.1	480	2.0	25.5	0.5
SFBP-62-100	48	8	58	4	62	2.9	2.1	15.1	560	2.0	25.5	0.5
SFBP-74-100	60	8	70	16	74	2.9	2.1	15.1	640	2.0	25.5	0.5
SFBP-98-100	60	8	94	40	98	3.5	2.8	15.1	830	2.0	25.5	0.5

15,500 lbs. Attachment Capacity @ 24" LC. Class IV Hook Type Mounting.

SFCP-44-155	40	10	40	4	44	3.2	2.6	22.0	760	2.5	33.5	0.5
SFCP-50-155	40	10	46	4	50	3.2	2.6	22.0	860	2.5	33.5	0.5
SFCP-62-155	48	10	58	4	62	3.2	2.6	22.0	990	2.5	33.5	0.5
SFCP-74-155	60	10	70	16	74	3.2	2.6	22.0	1135	2.5	33.5	0.5
SFCP-98-155	60	10	94	40	98	3.8	3.2	22.0	1400	2.5	33.5	0.5

PIN TO PIN POSITIONERS ALSO AVAILABLE. CONSULT FORK-CO.

Available custom designed to your specifications.

ROTATING FORK POSITIONERS



CAPACITIES FROM 3500 LB TO 7500 LB

This attachment is built using our FORK-CO Pallet Fork Clamp as a base. The differences between clamps and positioners are that positioners use smaller bore cylinders than clamps to reduce the stresses on the arms, and positioners have a lesser opening range. Fork positioners are not intended to squeeze and clamp the load. Pallet fork clamps are for that purpose.

FEATURES:

- **RDD-SERIES DIRECT DRIVE HIGH TORQUE ROTATOR BY FORK-CO USA.**
- **EXTRUDED ALUMINUM FRAME AND POLYMER BUSHINGS.**
- **ALLOY STEEL "T"-BAR ARM CARRIERS.**
- **360 DEGREE ROTATING HYDRAULIC DISTRIBUTOR WITH LOCK VALVES.**
- **VARIOUS FORK SIZES; VARIOUS OPENING RANGES; (APPLICATION SPECIFIC AS REQUIRED)**

SPECIFICATIONS:

**RECOMMENDED OPERATING PRESSURE: 1500 PSI MAX.
RECOMMENDED OIL FLOW: 6-10 GPM GPM**

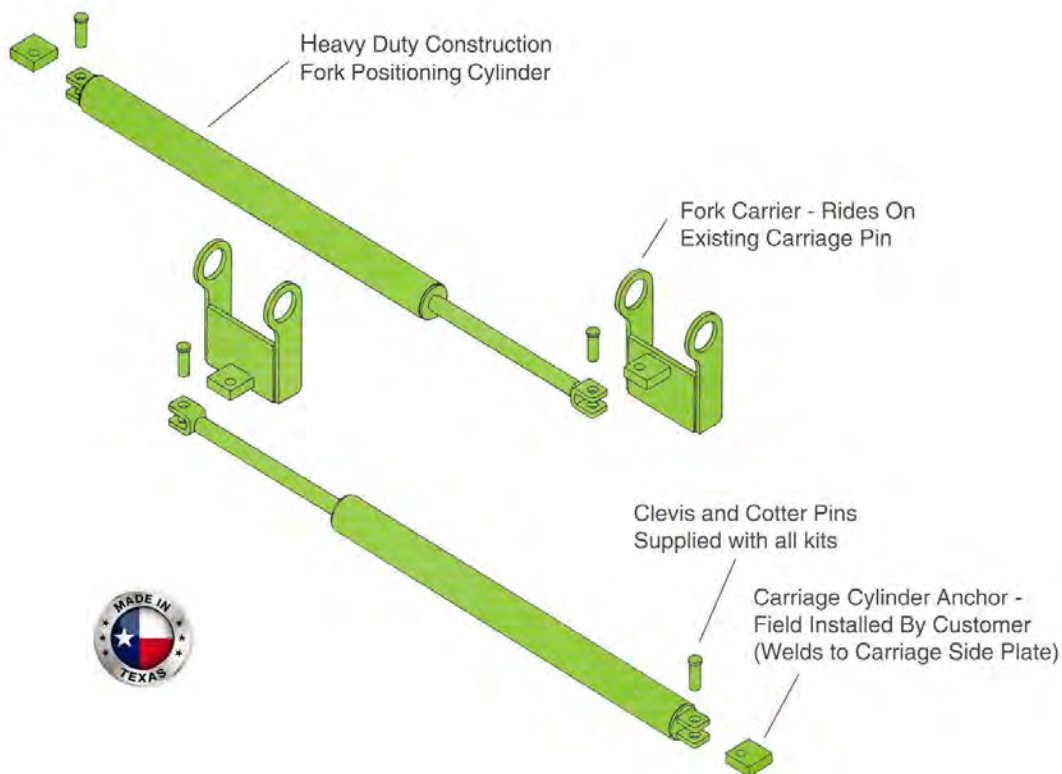
CAPACITIES AVAILABLE @ 24 "LC:

3,500 LB CLASS II	WITH 1.75 X 4 FORKS
4,500 LB CLASS II/III	WITH 1.75 X 5 FORKS
6,000 LB CLASS III	WITH 2 X 5 FORKS
7,000 LB CLASS III	WITH 2 X 6 FORKS

Capacities shown are attachment capacities only. Consult forklift manufacturer for the actual capacity rating on your forklift.

Available custom designed to your specifications.

FORK POSITIONER KITS



SPECIFICATIONS:

RECOMMENDED OPERATING PRESSURE: 1500 PSI MAX.
RECOMMENDED OIL FLOW: 6-10 GPM GPM

CAPACITIES AVAILABLE from 10,000lbs to 60,000lbs.

Ability to retrofit most Pin-Type Carriages.

Some carriage modification and field welding may be required.

Includes Fork Carriers, Cylinders, Cylinder Anchors and Clevis / Cotter Pins.

Hoses, Fitting, Flow Divider Valves and Adaptors available on request.

Available custom designed to your specifications.

DOUBLE WIDE SIDESHIFTING CARRIAGES

MTCW: Minimum Truck Carriage Width

A: Base Carriage Width

B: Individual Sideshifter Width w/o LBR's

C: Min/Max Width w/o LBR's

D: Individual Sideshifter Width with LBR's

E: Min/Max Width with LBR's

F: Individual Shift for each Sideshifter

G: Shift Over Center

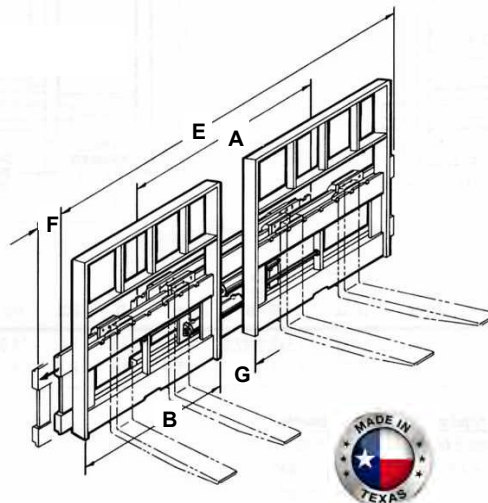
H: Individual Sideshifter Mounting

J: Fork Mounting

ET: Effective Thickness

HCG: Horizontal Center of Gravity

VCG: Vertical Center of Gravity



Model Number	MTCW	A	B	C	D	E	F	G	H	J	ET	HCG	VCG	Weight
10,000 lbs. Attachment Capacity @ 24" LC. Base Carriage has Class III Mounting. Please see Note A.														
DSSAA-31-55	36	70	31	70/80	33	70/84	15	6	II	II	4.5	1.9	16	540/740
DSSBA-31-100	36	70	31	70/80	33	70/84	15	6	III	II	4.5	1.9	16	540/740
DSSBA-38-100	38	76	38	76/94	39	78/96	15	6	III	II	4.5	1.8	12	635/785
DSSBA-42-100	38	84	42	84/102	43	86/104	15	6	III	II	4.5	1.8	12	790/950
DSSBA-48-100	38	96	48	96/114	49	98/116	15	6	III	II	4.5	1.8	12	945/1115
10,000 lbs. Attachment Capacity @ 24" LC. Base Carriage has Class III Mounting.														
DSSBB-38-100	38	76	36	76/94	39	78/96	15	6	III	III	4.5	1.8	12	800/950
DSSBB-42-100	38	84	42	84/102	43	86/104	15	6	III	III	4.5	1.8	12	985/1145
DSSBB-48-100	38	96	48	96/114	49	98/116	15	6	III	III	4.5	1.8	12	1165/1335
16,500 lbs. Attachment Capacity @ 24" LC. Base Carriage has Class IV Mounting														
DSSCB-42-165	42	84	42	84/102	43.5	87/105	15	6	IV	III	5.0	2.1	18	1250/1430
DSSCB-48-165	42	96	48	96/114	49.5	99/117	15	6	IV	III	5.0	2.1	18	1430/1620
DSSCB-60-165	42	120	60	120/138	61.5	123/141	15	6	IV	III	5.0	2.1	18	1610/1810

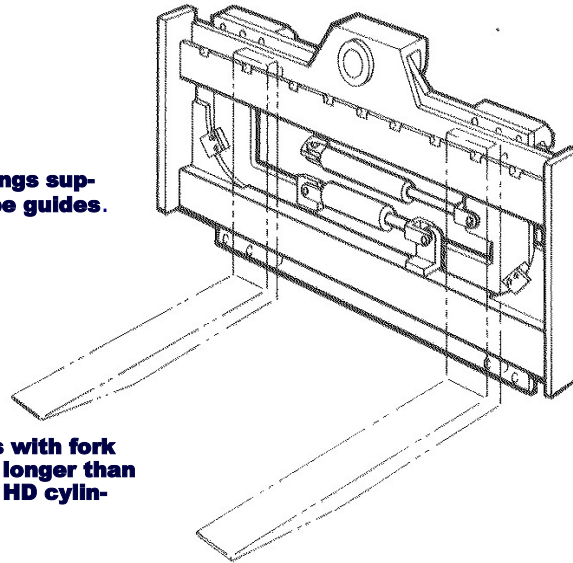
- **Note A:** Beverage Specials DSSAA-31-55 and DSSBA-31-100 are identical units except for mounting and capacity. Model DSSAA-31-%% is limited to 5,500 lbs @ 24" LC.
- Does not include Forks
- Load Back Rest is included in.

Available custom designed to your specifications.

SLOPE PILER CARRIAGE WITH SIDESHIFT



UHMW bearings support the slope guides.



Bronze bushed pivot pin is equipped with grease fittings.

Fork positioning cylinders have pressure relief protection.

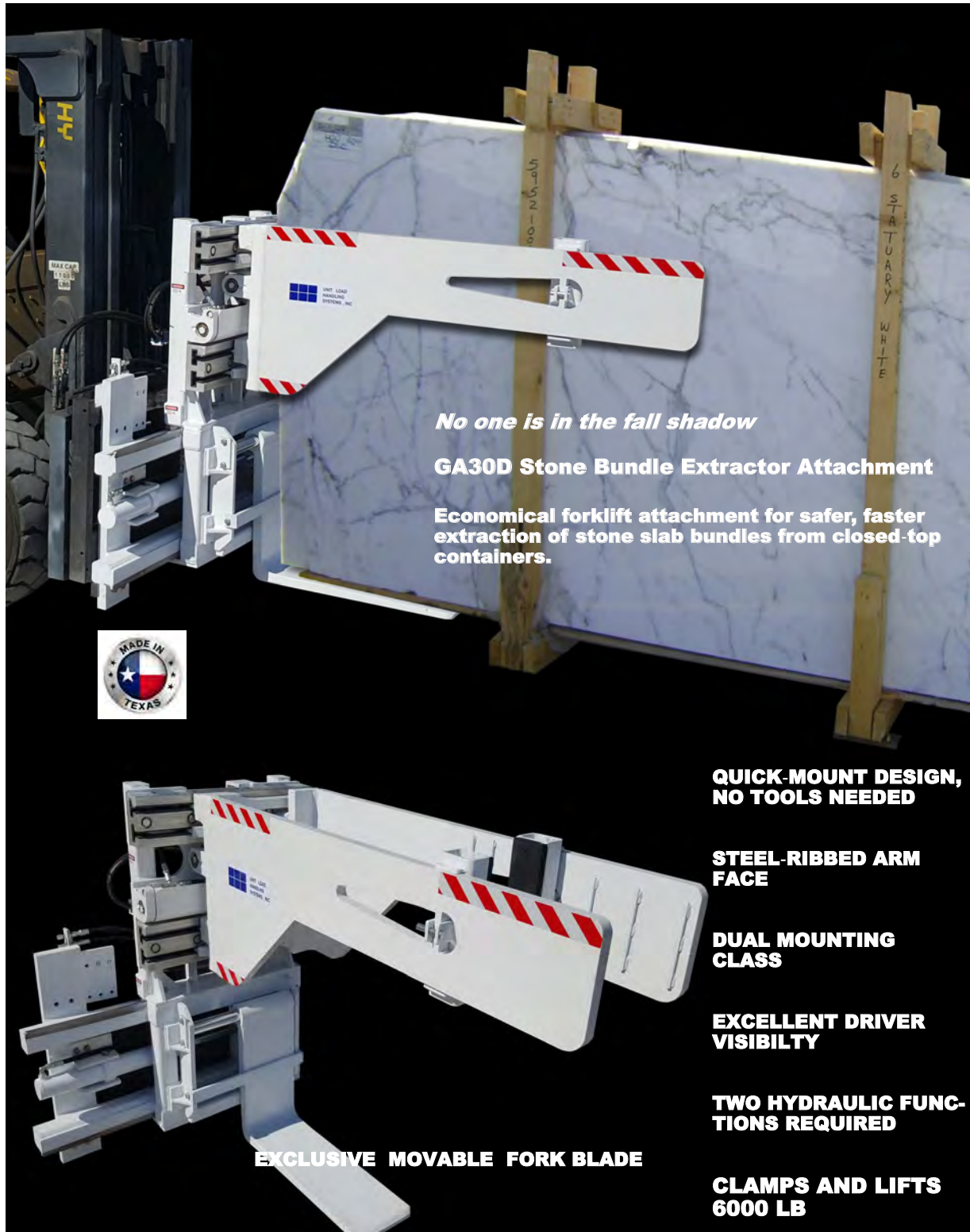
NOTE: On models with fork positioning, forks longer than 72 inches require HD cylinders.

Use the truck's standard forks. (Not included)

- **INCREASED PRODUCTIVITY FOR FORKLIFTS WHEN WORKING UNEVEN LOADS OR TERRAINS.** This attachment simplifies leveling the forks when the load alignment does not match the lift truck alignment.
- **Fifteen degrees of slope standard, increased slope available on special order.**
- **Available in ITA Class II, III, IV or pin type carriage.** Integral slope pilers also available.
- **WIDTH AND STROKE DIMENSIONS ARE MADE TO ORDER.**
- **Standard models are slope piling function only.** These are single hydraulic function units.
- **Models are available with sideshifting and slope.** These are two hydraulic function units.
- **Fork positioning can be added to the basic models.** Simultaneous fork movement is standard. Two hydraulic functions are required. To use sideshifting with this configuration, three functions are required.
- **Independent fork positioning is optional with three functions required for a non-sideshifting model and four functions for a sideshifting model.**
- **Use of a solenoid adaption allows one truck valve to operate multiple functions.**
- **Fork-Co slope pilers adapt to any ITA carriage.** Forks are not included. The truck's standard forks can be used.

Available custom designed to your specifications.

STONE BUNDLE EXTRACTOR



No one is in the fall shadow

GA30D Stone Bundle Extractor Attachment

Economical forklift attachment for safer, faster extraction of stone slab bundles from closed-top containers.

**QUICK-MOUNT DESIGN,
NO TOOLS NEEDED**

**STEEL-RIBBED ARM
FACE**

**DUAL MOUNTING
CLASS**

**EXCELLENT DRIVER
VISIBILITY**

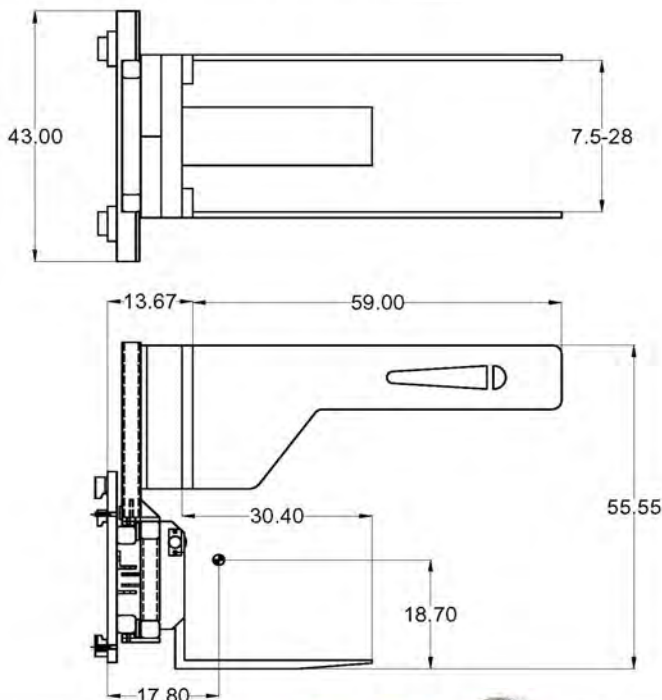
**TWO HYDRAULIC FUNC-
TIONS REQUIRED**

**CLAMPS AND LIFTS
6000 LB**

EXCLUSIVE MOVABLE FORK BLADE

Available custom designed to your specifications.

STONE BUNDLE EXTRACTOR



Lift Truck Requirements:

- 8,000 lb capacity Min.
- 4-way valve and hose group: two hydraulic auxiliary functions needed
- QD couplings if clamp is to be removed. Mounting hooks on clamp are QD. No tools are required to remove clamp.
- Overall height maximum of mast lowered and OH guard: 88 inches
- Free lift should be at least 11 inches

NOTE:

The GA30 D Bundle Extractor is designed to work inside the container from dock level. It is designed for straight-line bundle extraction only. The bundle end nearest the forklift is lifted, the bundle is clamped and the forward end remains on the floor. Extraction is straight-line. Not designed to transport bundles or steer bundles across the floor.

NOTE:

Capacity shown reflects lifting one end of the bundle. GA30 D lifts on its fork blade, clamps hydraulically on the bundle and extracts it directly rearward out of the container. Dock-level unloading required. **NOT INTENDED FOR GROUND LEVEL UNLOADING.**

Model Number:	GA30 D-B
Hydraulic Functions:	2
Capacity:	6,000 lbs
Opening Range:	7.5" - 28"
Sideshift Range:	17"
Mounting Class:	Class III & IV
Weight:	1,980 lbs
Frame Width:	43"
ET:	14.4"
HCG:	17.8"
VCG:	18.7"

Trailer jacks recommended to prevent container sway during unloading with a clamp truck. Clamp and stabilize bundles before cutting the bracing to free the bundle. Keep people out of the fall shadow. Maintain bundle integrity and stability.

Available custom designed to your specifications.

WPH-AB PIPE HOLD DOWN CLAMP



FEATURES

- **Very economical.**
- **Field installed as a retrofit to existing carriage.**
- **Secure handling of pipe.**
- **Designed to maximize the truck's residual capacity.**
- **Vertical stowage retains the trucks utility in other applications.**
- **Adaptable to most any field truck under 17,500 LB capacity, working extremely well on 5,000 LB to 15,500 LB rig trucks and with fork lengths up to 72 inches long.**
- **Easily removed for Fork and Carriage Maintenance.**
- **Sequenced Clamp Arms move in unison.**



Available custom designed to your specifications.

WPH-AB PIPE HOLD DOWN CLAMP



Mounts at end of carriage side plates.

Full Vertical (90 deg) Stowage. Operator visibility is not obstructed. Forks remain clear of obstruction. Full fork length is usable.

Single Hydraulic Function required.

CONTROLLED ARM MOVEMENT

- **Simultaneous arm movement ensures both arms engage and dis-engage the load together.**
- **Economical mechanical linkage keeps the secondary arm aligned to the primary arm through the full range of movement.**



PARALLEL ARM ALIGNMENT

- **At full stroke, the arms are in contact with the fork tips or pipe. The special actuators leverage the secondary clamp are down on to the pipe. The clamping bar will seek to level out on the pipe rack. Odd sizes can be clamped back against the fork shank.**
- **The WPH-AB is designed to securely clamp pipe anywhere along the fork blade.**



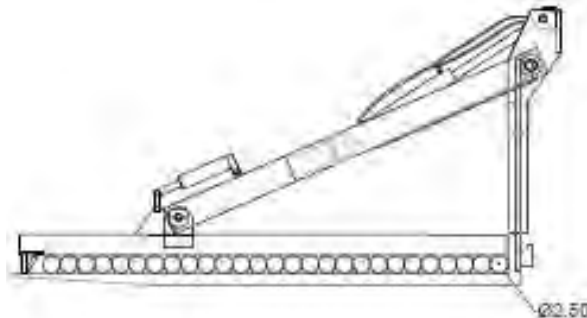
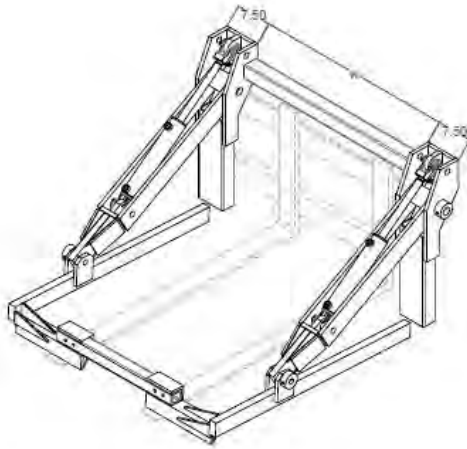
EXCLUSIVE MECHANICAL BIAS

- **It maintains the secondary in the full 90 degree position and eliminates rattle and clank during travel.**
- **It ensures that the tips are always the first point of contact.**
- **It clears the secondary up and away from the rack if the operator is maneuvering for the lift.**
- **Provides for positive contact of the actuator with the forks or the pipe, actuating the downward clamping movement of the secondary clamp bar.**



Available custom designed to your specifications.

WPH-AB PIPE CLAMP TECHNICAL DATA



MODEL:	WPH-AB
MOUNTING CLASS:	ITA Class II and Class III
Weight:	860lbs (CLII), 1,040lbs (CLIII)
AET:	Zero (0")
HCG Raised:	-2.75"
HCG Lowered:	11.5"
VCG Raised:	41"
VCG Lowered:	14"
CAPACITY (Class II)	5,500lbs @ 24"
CAPACITY (Class III)	10,000lbs @ 24"
CLAMPING FORCE	6,200lbs @ 1,750psi
PIPE DIAMETER RANGE	2.8" - 20"
OPERATING PRESSURE	1,500 to 1,750psi
FLOW RATE	6-12gpm
HYDRAULIC OIL	10W, ISO 19/16 Filtration
MAXIMUM OPERATING TEMP	80C (170F)

Available custom designed to your specifications.

WPH-PH PIPE CLAMP



**SECURE, EFFECTIVE HANDLING OF PIPE AND ROUND STOCK
MODELS FOR FORKLIFTS WITH CAPACITIES
FROM 21,000 LB TO 60,000 LB**

WPH SERIES PIPE HOLD-DOWN CLAMPS

BECAUSE SAFETY IS NOT OPTIONAL

Available custom designed to your specifications.

WPH-SW-HD PIPE HOLD-DOWN CLAMP

A heavy duty workhorse. Pipe and round stock clamp for most forklifts ranging from 17 tons to 27 tons.

SAFETY IS NOT OPTIONAL

**Secure pipe to the forks- prevent side spills and roll-offs.
Save costly product damage and potential injuries.**

PIN-ON DESIGN ON THE ORIGINAL FORK CARRIAGE NO CUTTING OR WELDING

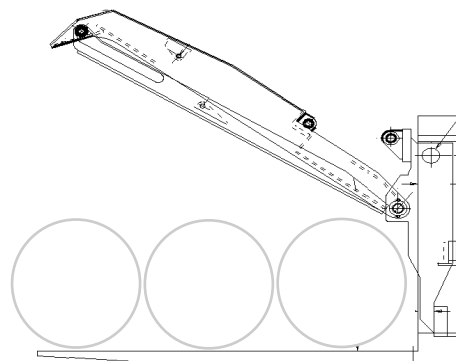
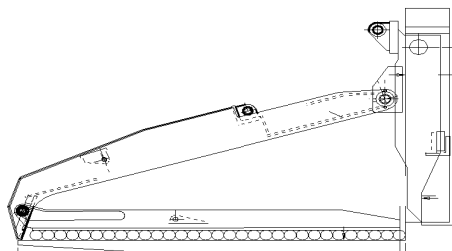
**Requires just one hydraulic function.
Can be set up for dual function operation.**



**Handles a variety of pipe and round stock sizes safely.
Models available for standard and wide opening ranges,
various lengths and widths.
Easy installation onto existing forklifts. No lost usable
fork length.**

Available custom designed to your specifications.

WPH-SW-HD PIPE HOLD-DOWN CLAMP



FORK BAR MOUNTING

- ALL PIPE CLAMPS IN THE WPH SERIES ARE DESIGNED FOR PIPE DIAMETERS FROM 3 INCHES TO 36 INCHES STANDARD. CONSULT FORK-CO FOR VARIATIONS AS REQUIRED.
- FORK-CO'S UNIT LOAD HANDLING BRAND PIPE CLAMPS REQUIRE NO WELDING, CUTTING OR MODIFICATIONS TO THE ORIGINAL FORKLIFT TRUCK CARRIAGE. OUR CLAMPS EMBED INTO THE FORK CARRIAGE ON THE ORIGINAL FORK
- SPECIFICATIONS DEPEND ON THE FORKLIFT CARRIAGE AND MOUNTING CONNECTION. DETAILED NUMBERS AND DIMENSIONS ARE DETERMINED AT THE TIME OF QUOTING AND VARY ACCORDING TO THE REQUIRED MOUNTING DIMENSIONS. CONSULT FORK-CO FOR ADDITIONAL INFORMATION.

MODEL	TRUCK CAPACITY @LC	CARRIAGE WIDTH MIN-MAX	FORK LENGTH	WEIGHT LBS	HCG LOWERED
WPH-SW-MD2	18 TO 25,000	84-98	96	2700	41
WPH-SW	26 TO 36,000@24"	84-120	96	3400	46
WPH-SW-HD	35 TO 52,000@48"	90-120	96	4600	46

- ALL CLAMPS REQUIRE SINGLE FUNCTION HYDRAULIC SUPPLY.
- TWO-FUNCTION CONTROLS ARE AVAILABLE AS AN OPTION.
- CLAMP ARM CONTACT SURFACE IS STEEL IN STANDARD CONFIGURATION. PROTECTIVE PADDING IS AVAILABLE.
- ALL FORK-CO PIPE CLAMPS COME COMPLETE WITH HOISING AND OPERATING VALVES INSTALLED. INSTALLER SUPPLIES THE SHORT CONNECTOR HOSES FROM FORKLIFT TO CLAMP HOSE TERMINATION BULKHEAD LOCATED AT REAR OF THE RIGHT HAND ARM.
- MAXIMUM OPERATING PRESSURE RANGE IS 1800 TO 2000 PSI. TRUCK AUXILIARY SETTINGS MUST BE IN COMPLIANCE TO ENSURE SECURE LOAD RETENTION TO PREVENT EXCESS FORK DEFLECTION.
- CONSULT FORKLIFT MANUFACTURER FOR ACTUAL RESIDUAL CAPACITY OF THE FORKLIFT WITH THE CLAMP INSTALLED

Available custom designed to your specifications.

WPH-FL SERIES PIPE CLAMP



Designed for loaders, extenders & fork-lift trucks. The FL series is a direct clamping, floating contact pad clamp for small to large diameter pipe.



WPH-200-3-30-FL

SPECIFICATIONS:

Capacity:	20,000 LB @ 24" load center
Width over forks:	87 "
OAW:	90 "
Weight, LB: (w/ 72" forks, no mount)	2,455
Effective Thickness:	6 "
Hor. C of G:	18.75 "

OPERATING:

Pipe Diameter Range, inches:	2.75 to 30
Operating PSI:	2,200
Control:	Dual over center valve / lock valve
Clamp Pads:	Steel, 7" wide x L (fork length)
Hydraulics:	SAE / JIC 37° flare adapters
Bearings:	Oillite bronze on chromed pins

OPTIONS:

Fork thickness, width, and length as required
Pin-type, ISO hook type or quick couple
Adjustable fork spread
Protection padding on contact pads



Available custom designed to your specifications.

PIPE CLAMP OPTIONS (ALL MODELS)

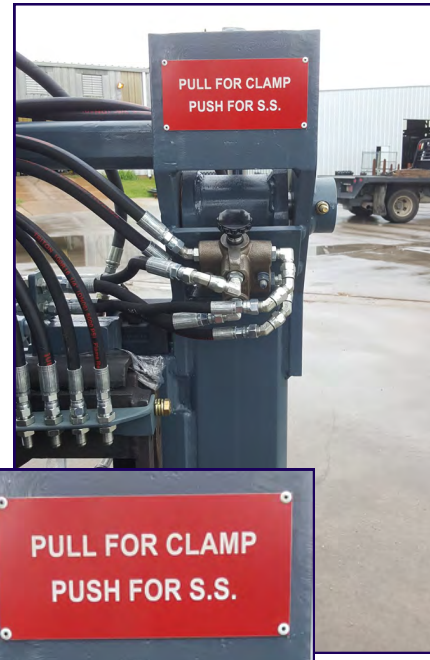
MANUAL FUNCTION SELECTOR VALVE

A manually-operated function selector that allows the pipe clamp and one other function to operate off the same hydraulic supply source.

For example, this selector will allow either the sideshifter or fork positioning function to operate on the forklift while the clamp is parked in the arms- vertical position.

When the selector is shifted, the clamp becomes operable and the alternate function is disabled.

The selected function remains operable until the selector is again shifted.



CLAMP SURFACE PADDING

Clamp contact surfaces can be protected by rubber pads. These are grooved rubber vulcanized to 1/2" thick aluminum backers. Pads are bolted in place and are sectioned for rotation or replacement due to wear.

Alternate materials available:

- Wood
- Bed Liner coating
- Polyurethane
- Nylon webbing
- Aluminum



Available custom designed to your specifications.

LOG AND POLE HOLD-DOWN CLAMP—LOG GRAPPLE



Log and pole grapples are available in sizes from ITA Class III and Class IV up to 45,000 LB capacity, pin type mounting.

These attachments are equipped with their own fork carriage. Installation is to the front of the existing carriage. The original truck forks can be installed on the grapple's frame.

Opening ranges and arm length/spacing are forklift/loader dependent..

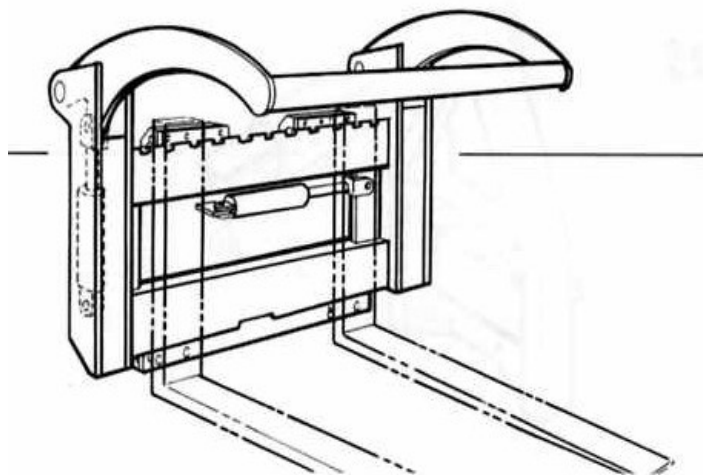


Available custom designed to your specifications.

END HOLD-DOWN CARRIAGES

A: Fork Spread Out to Out
B: Fork Spread In to In
C: Overall Width
HCG: Horizontal Center of Gravity
VCG: Vertical Center of Gravity
ET: Effective Thickness

All measurements are in inches.
Forks are not included.



10,000 lbs. Attachment Capacity @ 24" LC. Class III Hook Type Mounting											
Model	Minimum Carriage	Mounting Class	Total Sideshift	A	B	C	HCG	VCG	ET	Bar Width	Weight
ENBB-57-100	38.5	III	N/A	44	0	56.5	2.4	16.0	3.1	48.5	610
ESBB-57-100	38.5	III	8"	44	0	56.5	3.0	16.0	3.1	48.5	650

Hold-Down Opening Range is determined by the height of the load to be handled.

Specify Load Height at time of order.

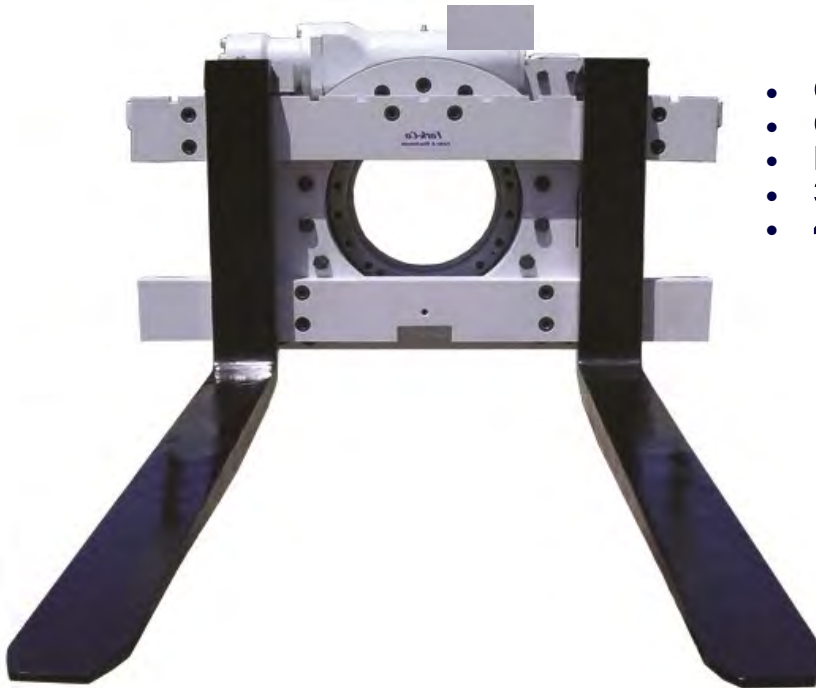
For opening ranges greater than 12" to 45", contact our factory.

Please consult our factory for Load Backrests.



Available custom designed to your specifications.

RDD SERIES ROTATORS



- **Great visibility**
- **Clean, rugged Design**
- **Direct Drive**
- **360° Rotation**
- **4,500 & 7,000lb Units**

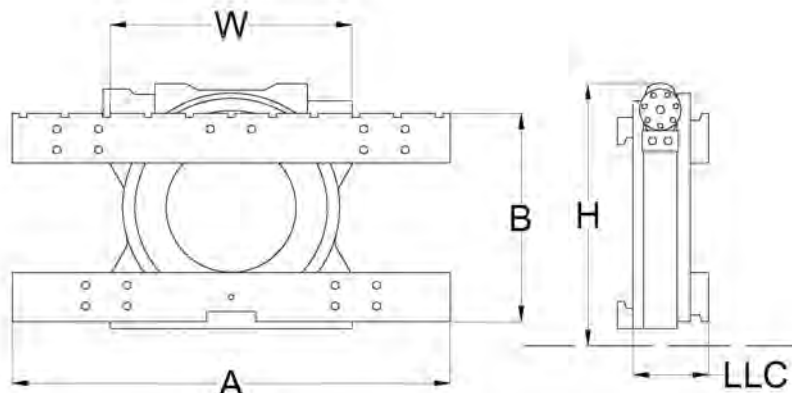


- **CLEAN DESIGN**
- **LESS MOVING PARTS**
- **HIGH TORQUE**
- **SELF-LOCKING**
- **NO LOAD DRIFT**
- **NO EXPOSED HOSES**
- **FULLY SEALED**



Available custom designed to your specifications.

RDD 45 & RDD 70 ROTATOR



CAPACITY 4,500 LB @ 24" LC, CLASS II OR III MOUNTING

360 DEGREE CONTINUOUS ROTATION

MODEL NUMBER	CAP @ 24" LC	MOUNT CLASS	FORK BAR (A / B)	HEIGHT IN. (H)	WEIGHT LB	AET	HCG IN.	VCG IN.	CARRIAGE WIDTH MIN.
RDD 45-A-37	4,500	II	37 / II	23.9	486	6.9	3.8	11.8	32
RDD 45-A-42	4,500	II	42 / II	23.9	511	6.9	4	11.8	32
RDD 45-B-37	4,500	III	37 / II	27.3	506	6.9	3.6	12.1	32
RDD 45-B-42	4,500	III	42 / II	27.3	532	6.9	3.8	12.1	32

CAPACITY 7,000 LB @ 24" LC, CLASS III MOUNTING

360 DEGREE CONTINUOUS ROTATION

MODEL NUMBER	CAP @ 24" LC	MOUNT CLASS	FORK BAR (A/B)	HEIGHT IN. (H)	WEIGHT LB	AET	HCG IN.	VCG IN.	CARRIAGE WIDTH MIN.
RDD 70-B-42	7,000	III	42 / III	30.1	643	7.2	3.7	13.6	32
RDD 70-B-48	7,000	III	48 / III	30.1	668	7.2	4.1	13.6	32

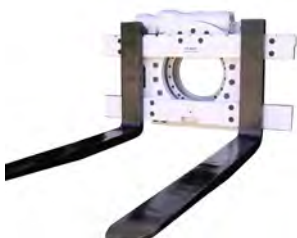
Maximum operating pressure: 2,000 PSI

Single function attachment.

Recommended flow rate min. 8 GPM, max. 16 GPM

NOTE:

Consult the forklift manufacturer for the rated capacity of the forklift with this attachment installed. Actual capacity may be less than the capacity shown here.



FULLY-SEALED HOUSING AND RING GEAR ASSEMBLY MAKES THE RDD SERIES IDEAL FOR SCRAP YARDS, RECYCLERS, TANNERIES AND SEAFOOD OPERATIONS. NO EXPOSED HOSES OR FITTINGS.



Available custom designed to your specifications.

STATIONARY LOAD INVERTER



- **EFFICIENT LOAD TRANSFER BETWEEN LOAD BASES**, pallet to pallet, pallet to slip sheet, slip sheet to pallet.
- **180 degree gear drive rotation**
- **Side stabilizer plate secures the load**, aligns and squares off the load side.
- **Fork pockets for forklift transport.**

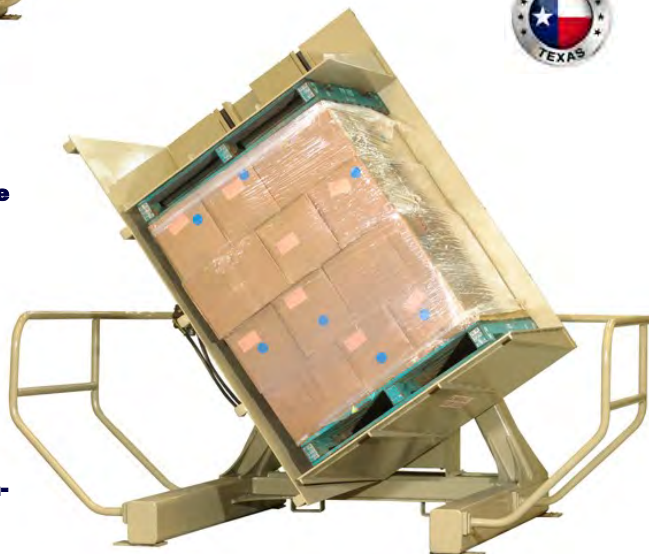


OPERATION

The outbound load base is prepared and positioned. For example, a stack of pallets is inverted and set aside. Load is positioned in the inverter and an inverted pallet placed on top. Clamp load. Invert 180 degrees. Open clamp. Remove load and top pallet.

Inverting loads without a top pallet allows removal and replacement of the bottom pallet while maintaining load orientation to the load base, stacking product top-up.

The inverter can also transfer loads from pallet to slip sheet. It is ideal for inverting wine or for resettling liquids. Use it to remove damaged product from lower layers or to remove freezer spacers.



MODEL SLV -40

OPTIONAL:

Dual moving arm version for shorter loads.
Manual valve control standard.

CAPACITY	4,000LB @ 24" LC	WEIGHT	3200 LB
PLATEN SIZE	50 x 44 inches	BASE WIDTH	62 inches
OPENING	40 - 75 inches	MAX. HEIGHT	87 inches
POWER PACK	240/480 VAC 3PH 60Hz	MAX. ROTATIONAL CLEARANCE	90 inches
ROT. SPEED	3.5 RPM	LENGTH	76 inches
CONTROLS	Manual control valve	TANK CAPACITY	15 gal. w/ sight gauge 2000 psi w/ relief and lock valve
MOUNTING	Free standing w/ fork pockets or bolted	SAFETY GUARDING	1.5 inch dia. tube bolted & removable

FORK FRAMES AND FORK SPREADERS

Here are some of the many styles of fork spreaders we build. Each design is based on the customer's specific job at hand.

From the simple spreader bar mounted to the forks or the carriage, to extended fork mounted and carriage mounted fork frames, long, unstable and flexible products are easily handled and carried safely and securely.

The following pages illustrate the most popular styles we build. They are able to fit to any forklift or loader or telehandler.

Fork frames and spreaders are available with optional sideshift, quick change, manual or hydraulic fork spread and with a broad variety of fork capacities and lengths.

The spreader should be wide enough to support the load across all the forks. If the bow of the product is severe, we can reinforce the frame and outer forks to take the excess loads.

Commonly used for handling sheet metals and formed materials, re-bars, metal building sheathing, pipe and rounds, beams and bars, flexible lumber structures and engineered lumber products.

Call us if you don't get the data you need from this site. We have many years of experience to share to help you handle these goods safely and securely.



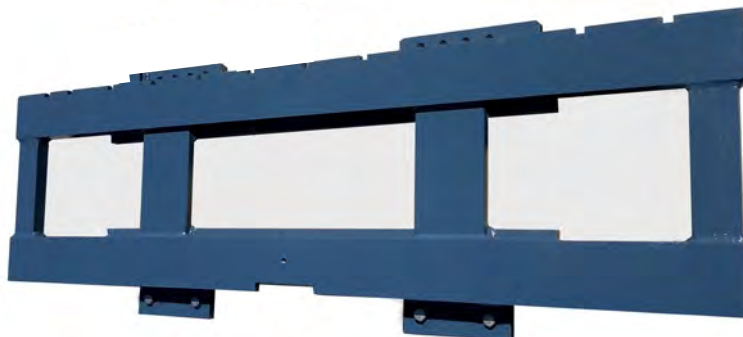
Available custom designed to your specifications.

FALSE FRAMES FOR HOOK-TYPE CARRIAGES

A false frame is used to widen the fork spacing beyond the width of the truck's carriage.

These attachments are equipped with quick disconnect lower mountings for easy installation and removal.

Can be used for two or more forks such as for multi-pallet handling.



False Frames

Model Number	Capacity LBS @ 24" Load Center	Hook Type Mounting Class	Minimum Truck Carriage Width	Fork Bar Width	Fork Spread I to I - O to O	ET	HCG	VCG	Weight LBS
FHAA-37-55	5500	II QD	37"	37"	0" to 37"	2.0"	1.2"	11.0"	155
FHAA-48-55	5500	II QD	37"	48"	0" to 48"	2.0"	1.3"	11.0"	225
FHAA-60-55	5500	II QD	37"	60"	0" to 60"	2.5"	1.5"	11.0"	340
FHAA-72-55	5500	II QD	37"	72"	0" to 72"	2.5"	1.6"	11.0"	420
FHAA-84-55	5500	II QD	37"	84"	0" to 84"	2.5"	1.7"	11.0"	470
FHBB-42-90	9000	III QD	37"	42"	0" to 42"	2.5"	1.4"	14.0"	225
FHBB-48-90	9000	III QD	37"	48"	0" to 48"	3.0"	1.5"	14.0"	285
FHBB-60-90	9000	III QD	37"	60"	0" to 60"	3.0"	1.9"	14.0"	395
FHBB-72-90	9000	III QD	37"	72"	0" to 72"	3.0"	1.9"	14.0"	455
FHBB-84-90	9000	III QD	37"	84"	0" to 84"	3.0"	1.9"	14.0"	500
FHCC-84-150	15,000	IV QD	48"	84"	0" to 84"	3.3"	2.1"	18.0"	700
FHCC-96-150	15,000	IV QD	48"	96"	0" to 96"	3.3"	2.3"	18.0"	760
FHCC-120-150	15,000	IV QD	48"	120"	0" to 120"	4.5"	2.3"	18.0"	930

Available custom designed to your specifications. Listed sizes are representative and do not cover the full range.

FORK MOUNTED SPREADER FRAME

A: OUTER FORK T x W

B: RECOMMENDED INNER FORK WIDTH

L: LENGTH INNER POCKET

F: LENGTH OUTER FORK

FORK LENGTHS VARIED AS NEEDED. INNER AND OUTER FORKS CAN DIF-



MODEL	CAP LB @ 24"	A	B	L	F	OUTER OTO	POCKET	ET	HCG	WEIGHT LB
WFAF-108-55	5,500	1.5	4	48	48	108	2 X 6	6.5	7.3	845
WFAF-120-55	5,500	1.5	4	48	48	120	2 X 6	6.5	7.1	965
WFAF-144-55	5,500	1.5	4	48	48	144	2 X 6	6.5	6.8	1115
WFAF-168-55	5,500	1.5	4	48	48	168	2 X 6	6.5	6.1	1375
MODEL	CAP LB @ 24"	A	B	L	F	OUTER OTO	POCKET	ET	HCG	WEIGHT LB
WFBF-108-100	10,000	1.75	5	48	48	108	2.5 X 7	8.5	7.5	1035
WFBF-120-100	10,000	1.75	5	48	48	120	2.5 X 7	8.5	7.3	1145
WFBF-144-100	10,000	1.75	5	48	48	144	2.5 X 7	8.5	7	1230
WFBF-168-100	10,000	1.75	5	48	48	168	2.5 X 7	8.5	6.9	1340
WFBF-204-100	10,000	1.75	5	48	48	204	2.5 X 7	8.5	7.1	1560
WFDF-240-100	10,000	1.75	5	48	48	240	2.5 X 7	8.5	7	1830
WFBF-268-100	10,000	1.75	5	48	48	268	2.5 X 7	8.5	6.8	2175
MODEL	CAP LB @ 24"	A	B	L	F	OUTER OTO	POCKET	ET	HCG	WEIGHT LB
WFCF-96-155	15,500	2	6	48	48	96	3.25 X 7.5	8.5	8.9	1390
WFCF-120-155	15,500	2	6	48	48	120	3.25 X 7.5	8.5	8.3	1510
WFCF-144-155	15,500	2	6	48	48	144	3.25 X 7.5	8.5	8.1	1750
WFCF-168-155	15,500	2	6	48	48	168	3.25 X 7.5	8.5	7.8	1985
WFCF-192-155	15,500	2	6	48	48	192	3.25 X 7.5	8.5	7.4	2290
WFCF-220-155	15,500	2	6	48	48	220	3.25 X 7.5	8.5	7.1	2685
WFCF-268-155	15,500	2	6	48	48	268	3.25 X 7.5	8.5	6.2	3490

FORK MOUNTED SPREADERS WILL REDUCE THE USABLE LENGTH OF THE ORIGINAL TRUCK FORKS. The fork sleeves recover this length.
OUTER FORKS ARE STABILIZER FORKS ONLY. THEY ARE NOT INTENDED TO CARRY THE FULL RATED CAPACITY. This will be a shared loading across all four forks.

Available custom designed to your specifications. Listed sizes are representative and do not cover the full range.

CARRIAGE MOUNTED SPREADER FRAMES



CAPACITIES AND WIDTHS 8 TO 40 FEET & 5,000 TO 36,000 LBS

FORK FRAMES, CARRIAGE MOUNTED, WITH/WITHOUT SIDESHIFT



FORK FRAMES, CARRIAGE MOUNTED, QUICK ATTACH MOUNTING

QUICK-ATTACH fork frames are similar specifications to the fixed mount fork frames, above.

This type allows for the multi-purpose use of the forklift. Removal takes less than 5 minutes. No tools required.

Capacities range up to 36,000 LB and up to 40 foot wide spread. Various fork lengths are available from Fork-Co USA.

Hydraulic fork positioning is also available on the quick attach version as well as the carriage mount type.

SHOWN: WFQP-330 QA Fork Frame, 33,000 LB capacity, 24 feet wide



Available custom designed to your specifications.

"D" SERIES BALE CLAMP

CLAMPING, SIDESHIFTING OR REVOLVING ATTACHMENT FOR COTTON, TEXTILES, SYNTHETICS, RECYCLE FACILITIES, SCRAP YARDS, WASTE BALES, STEVEDORES, ETC.



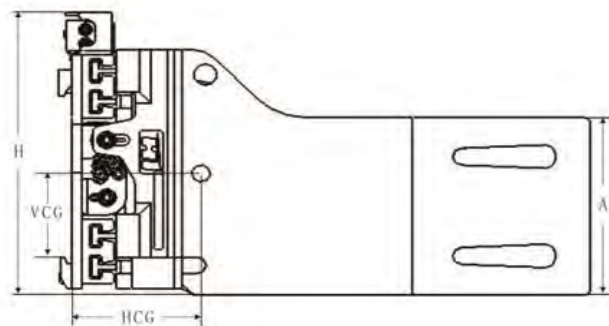
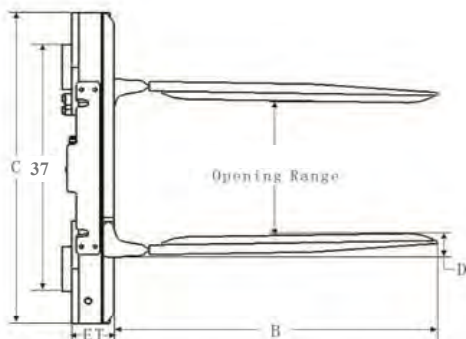
FOUR-BALE COTTON CLAMPS AVAILABLE



- **SIDESHIFTING, NON-SIDESHIFTING, AND REVOLVING**
- **CAPACITIES FROM 3,500 LB TO 7,500 LB**
- **EQUALIZED ARM TRAVEL**
- **E-PROFILE ALUMINUM FRAME**
- **T-BAR ALLOY STEEL ARM CARRIERS**
- **SELF-ALIGNING CYLINDERS**
- **LUBE-FREE CONTOURED ARM BEARINGS**

Available custom designed to your specifications.

"D" SERIES BALE CLAMP



SIDESHIFTING & NON-SIDESHIFTING

Capacity 24" LC	Model	Class	Opening Range	A	B	FRAME W	Arm Thick	VCG	WT / LB	ET	HCG
2500	GA15D-BCS-01A	II	18-63	18	36	35	2.1	10.5	1023	5	15.5
2500	GA15D-BCS-02A	II	18-63	18	40	35	2.5	8.75	1045	5	15.6
3500	GA20D-BCS-01A	II	19-68	18	27	41	2	10	850	5	11.5
3500	GA20D-BCS-03A	II	22-70	18	36	41	2.5	9.3	1047	5	14
3500	GA20D-BCS-04A	II	21.5-69.5	24	40	41	3	9.5	1040	5	14.6
3500	GA20D-BCS-05A	II	22-70	24	44	41	3.5	9.8	954	5	15.2
5000	GA30D-BCS-01B	III	24-76	18	40	43	3	10	1064	6	8.5
5000	GA30D-BCS-02B	III	24-76	18	44	43	3.25	9.8	1194	6	10.9
5000	GA30D-BCS-03B	III	23-75	18	48	43	3.5	9.6	1320	6	13.3
COTTON BALE CLAMPS											
4000	GA30D-BCS-04A	II	19.5-90.5	18	27	63	2	9.8	1562	5	9.8
4000	GA30D-BCS-04B	III	19.5-90.5	18	27	63	2	10.2	1606	5	9.8

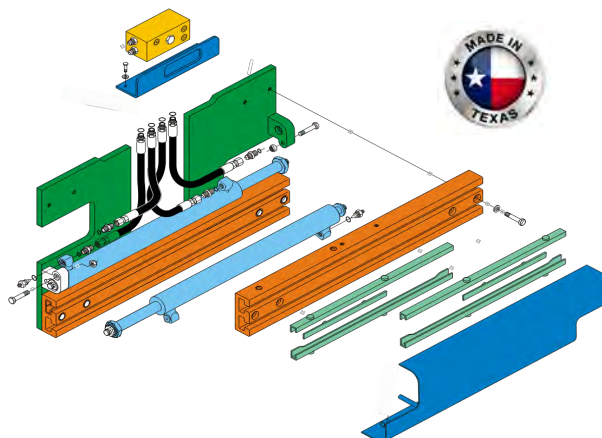
NOTE: Capacity of the truck with an attachment may be less than the attachment capacity shown here. Always consult the forklift manufacturer for actual capacity.

Sideshifting: 2 hydraulic functions required
Non-sideshifting: 1 hydraulic function required
Maximum operating pressure: 2000 PSI.
Recommended flow rate:

GA15D 8-12 GPM
GA20D 10-18 GPM
GA30D 10-18 GPM

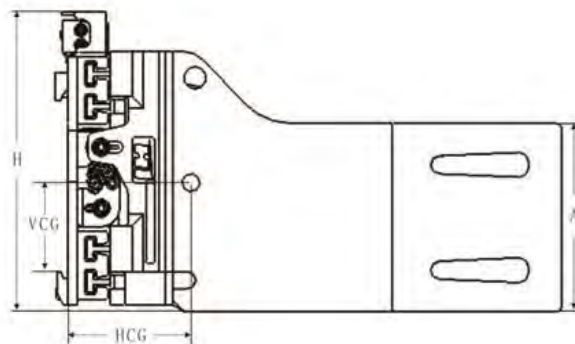
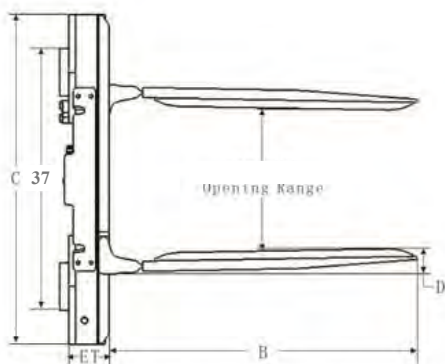
Optional:

- Special opening ranges
- Arm sizes
- Quick change mounting
- Bolt-on arms
- Solenoid selector valve
- Relief valves



Available custom designed to your specifications.

ROTATING "D" SERIES BALE CLAMP



ROTATING BALE CLAMPS

Capacity@ 24" LC	Model	Class	Opening Range	A	B	FRAME W	Arm Thick	VCG	WT / LB	ET	HCG
2500	GA15D-BCR-01A	II	18-63	18	36	35	2.1	11.5	1443	11	11.5
2500	GA15D-BCR-02A	II	18-63	18	40	35	2.5	10.7 5	1465	11	13.6
3500	GA20D-BCR-01A	II	19-68	18	27	41	2	11	1330	11	11.5
3500	GA20D-BCR-03A	II	22-70	18	36	41	2.5	10.3	1527	11	12.2
3500	GA20D-BCR-04A	II	21.5-69.5	24	40	41	3	10.5	1582	11	13.2
3500	GA20D-BCR-05A	II	22-70	24	44	41	3.5	10.8	1655	11	13.6
5000	GA30D-BCR-01B	III	24-76	18	40	43	3	13.5	1760	12	9.5
5000	GA30D-BCR-02B	III	24-76	18	44	43	3.25	13.8	1793	12	10.9
5000	GA30D-BCR-03B	III	23-75	18	48	43	3.5	14.6	1866	12	13.3
ROTATING COTTON BALE CLAMPS											
4000	GA30D-BCR-04A	II	19.5-90.5	18	27	63	2	11.6	2142	11	11.8
4000	GA30D-BCR-04B	III	19.5-90.5	18	27	63	2	12.7	2216	11	11.8

NOTE: Capacity of the truck with an attachment may be less than the attachment capacity shown here. Always consult the forklift manufacturer for actual capacity.

Sideshifting: 2 hydraulic functions required

Non-sideshifting: 1 hydraulic function required

Maximum operating pressure: 2000 PSI.

Recommended flow rate:

GA15D 8-12 GPM
GA20D 10-18 GPM
GA30D 10-18 GPM

Optional:

- Special opening ranges
- Arm sizes
- Quick change mounting
- Bolt-on arms
- Solenoid selector valve
- Relief valves



Available custom designed to your specifications.

16 BALE UNIT PULP BALE CLAMP

HEAVY DUTY, HIGH CAPACITY, POWERFUL CLAMP TO HANDLE UNITIZED PULP BALES

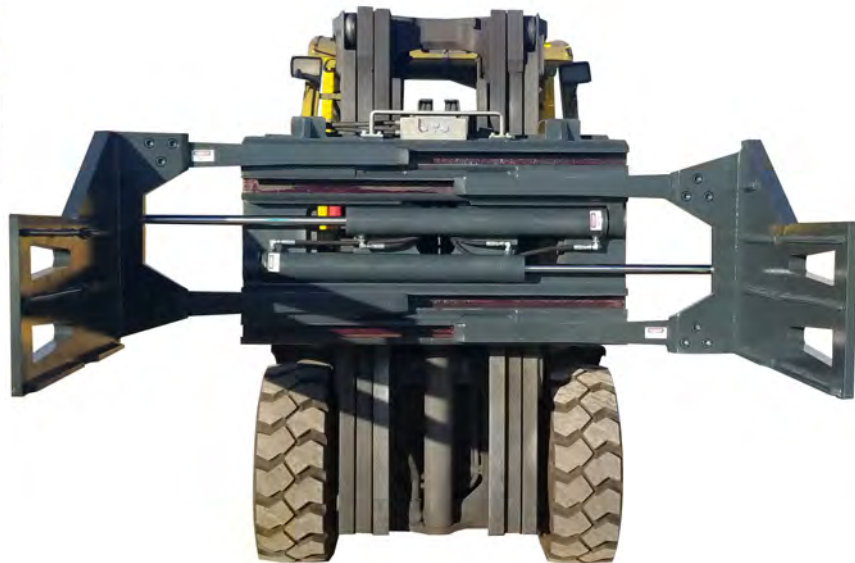
SPECIFICATIONS:

- **CAPACITY:** 9000 LB @ 30" LC
- **ARM DIMS:** 55" LONG X 18" HIGH
- **OPENING RANGE:** 25" TO 84"
- **SIDESHIFT OR NON-SIDESHIFT**
- **CLASS IV MOUNTING**



SPECIFICATIONS:

- **WEIGHT:** 3024 LB
- **ET / LLC:** 9.5"
- **HCG:** 14.1"
- **VCG:** 13.64"
- **RECOMMENDED PSI:** 2,200
- **RECOMMENDED FLOW:** 12-16 GPM

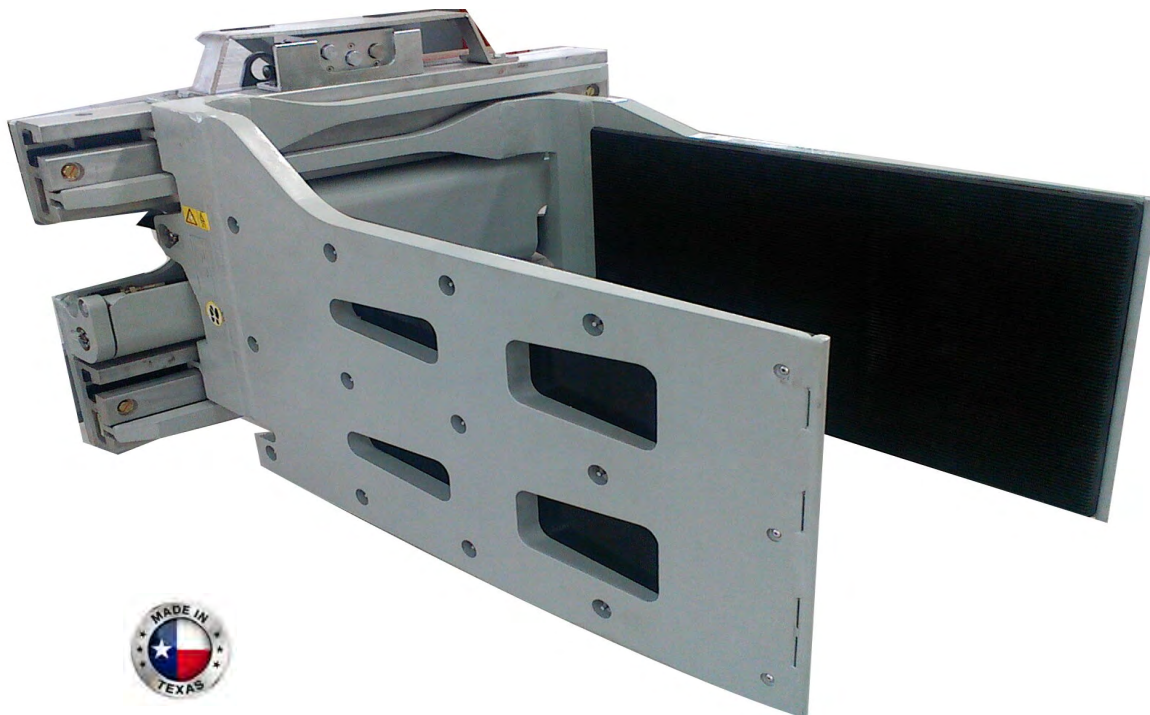


FEATURES:

HIGH STRENGTH ALLOY STEEL ARMS AND ARM CARRIER BARS; ALUMINUM BRONZE ARM BUSHINGS; POWERFUL HYDRAULIC CYLINDERS; SUN HYDRAULICS; HIGH PRESSURE HOSE; BOLTED ARMS AND CARRIERS; LARGE, HEAVY DUTY GRIPPING RIBS.

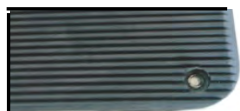
Available custom designed to your specifications.

MULTI PURPOSE & RIGID ARM CARTON CLAMP



MULTI PURPOSE & RIGID ARM CARTON CLAMPS are used for handling palletless corrugated fiber board cartons and boxes, wooden bins and crates, totes and lugs and in many bale applications where totes, bins, Gaylords etc. are common.

Arms surface is aluminum bonded to vulcanized grooved rubber to ensure secure grip and long life. The bolted rubber surface is replaceable.



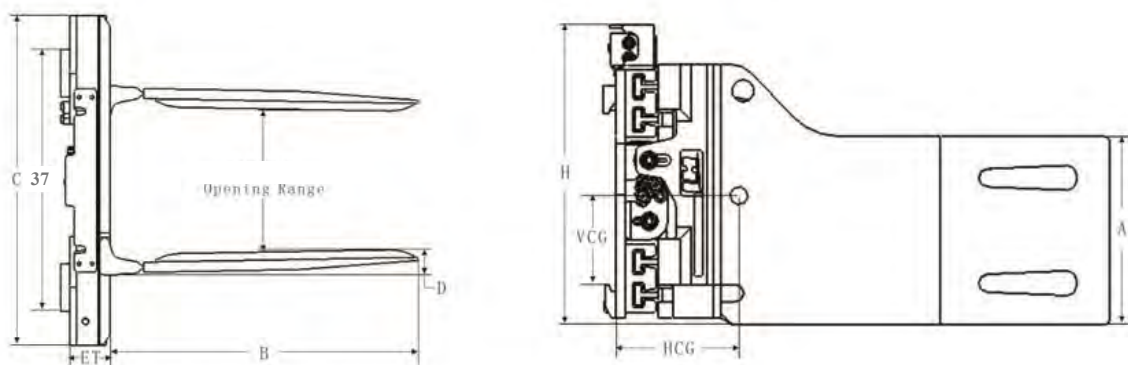
Available in standard and custom opening ranges as well as custom arm lengths and heights.

Arms are very thin profile for easy load entry. Tips of the arms are protected by steel guards to preserve the surface integrity.

- **SIDESHIFTING, NON-SIDESHIFTING, AND ROTATING**
- **CAPACITIES FROM 3,000 LB TO 7,000 LB**
- **ADJUSTABLE ARM TRAVEL SPEEDS**
- **E-PROFILE ALUMINUM FRAME**
- **T-BAR ALLOY STEEL ARM CARRIERS**
- **SELF-ALIGNING CYLINDERS**
- **LUBE-FREE CONTOURED ARM BEARINGS**
- **CYLINDER PROTECTION BUMPER**
- **LOW PROFILE FRAME**

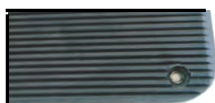
Available custom designed to your specifications.

MULTI PURPOSE & RIGID ARM CARTON CLAMP



Capacity@ 24" LC	Catalog Order No.	Class	Opening Range	A	B	FRAME W	Arm Thick	VCG	WT / LB	ET	HCG
1500	GA08D-MCS-01A	II	17.5-66.5	15	36	42	1.75	10.1	540	5	13.8
2500	GA12D-MCS-01A	II	18-63	18	40	35	2.1	10.5	1023	5	15.5
2500	GA12D-MCS-02A	II	20.75-69	18	48	35	2.5	8.75	1045	5	15.6
3500	GA20D-MCS-05A	II	21.5-70.8	18	36	41	2	10	850	5	1105
3500	GA20D-MCS-02A	II	22-70	18	40	41	2.5	9.3	1047	5	14
3500	GA20D-MCS-01A	II	21.5-69.5	24	44	41	3	9.5	1040	5	14.6
3500	GA20D-MCS-06A	II	22-70	24	48	41	3.5	9.8	954	5	15.2
5000	GA30D-MCS-01B	III	24-76	18	36	43	3	10	1064	6	8.5
5000	GA30D-MCS-02B	III	23.5-75.5	18	42	43	3.25	9.8	1194	6	10.9
5000	GA30D-MCS-03B	III	23-75	18	48	43	3.5	9.6	1320	6	13.3

Bonded, grooved rubber contact pads provided needed friction for handling. Bonding to aluminum plates makes the rubber extremely durable.

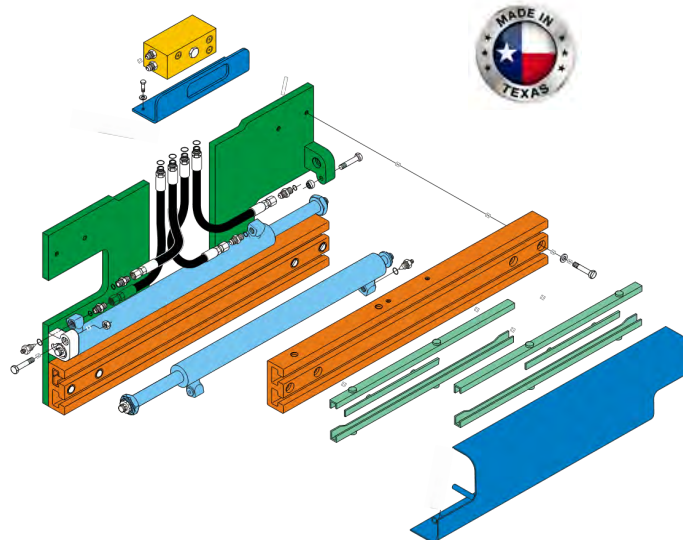


Sideshifting: 2 hydraulic functions required
Non-sideshifting: 1 hydraulic function required
Revolving: 2 hydraulic functions required
Maximum operating pressure: 2000 PSI.
Recommended flow rate:

GBC19D 6-10 GPM
GBC27D 10-14 GPM

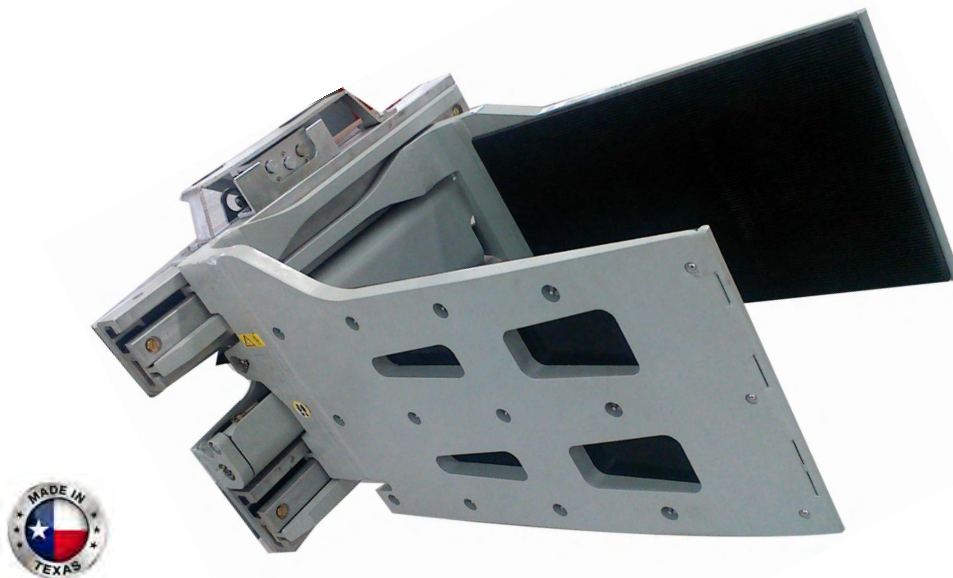
Optional:

- Special opening ranges
- Arm sizes
- Quick change mounting
- Bolt-on arms
- Solenoid selector valve
- Relief valves
- Segmented pads



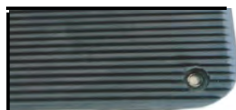
Available custom designed to your specifications.

ROTATING MULTI-PURPOSE CLAMP



MULTI PURPOSE & RIGID ARM CARTON CLAMPS are used for handling palletless corrugated fiber board cartons and boxes, wooden bins and crates, totes and lugs and in many bale applications where totes, bins, Gaylords etc. are common.

Arms surface is aluminum bonded to vulcanized grooved rubber to ensure secure grip and long life. The bolted rubber surface is replaceable.



Available in standard and custom opening ranges as well as custom arm lengths and heights.

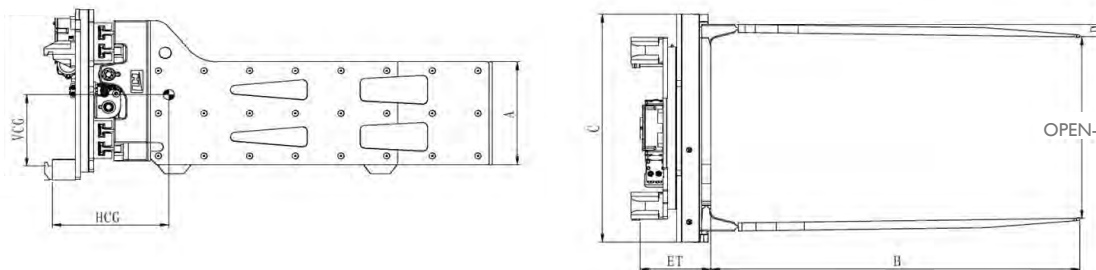
Arms are very thin profile for easy load entry. Tips of the arms are protected by steel guards to preserve the surface integrity.

- **REVOLVING 360 DEGREE ROTATION**
- **CAPACITIES FROM 3,000 LB TO 7,000 LB**
- **ADJUSTABLE ARM TRAVEL SPEEDS**
- **E-PROFILE ALUMINUM FRAME**
- **T-BAR ALLOY STEEL ARM CARRIERS**
- **SELF-ALIGNING CYLINDERS**
- **LUBE-FREE CONTOURED ARM BEARINGS**
- **CYLINDER PROTECTION BUMPER**
- **STEEL ABRASION PROTECTION**
- **LOW PROFILE FRAME**

NOTE: Capacity of the truck with an attachment may be less than the attachment capacity shown here. Always consult the forklift manufacturer for actual capacity.

Available custom designed to your specifications.

ROTATING MULTI-PURPOSE CLAMP



360 DEGREE ROTATING MULTI PURPOSE & RIGID ARM CARTON CLAMP

Capacity@ 24" LC	Catalog Order No.	Class	Opening Range	A	B	FRAME W	Arm Thick	VCG	WT / LB	ET	HCG
3500	GA20D-MCR-02A	II	22-70	18	40	41	2.5	13.4	1505	10.5	13.75
3500	GA20D-MCR-01A	II	22-70	24	36	41	3	13.4	1475	10.5	11.5

Bonded, grooved rubber contact pads provided needed friction to reduce squeeze force required for handling. Bonding to aluminum plates makes the rubber extremely durable.

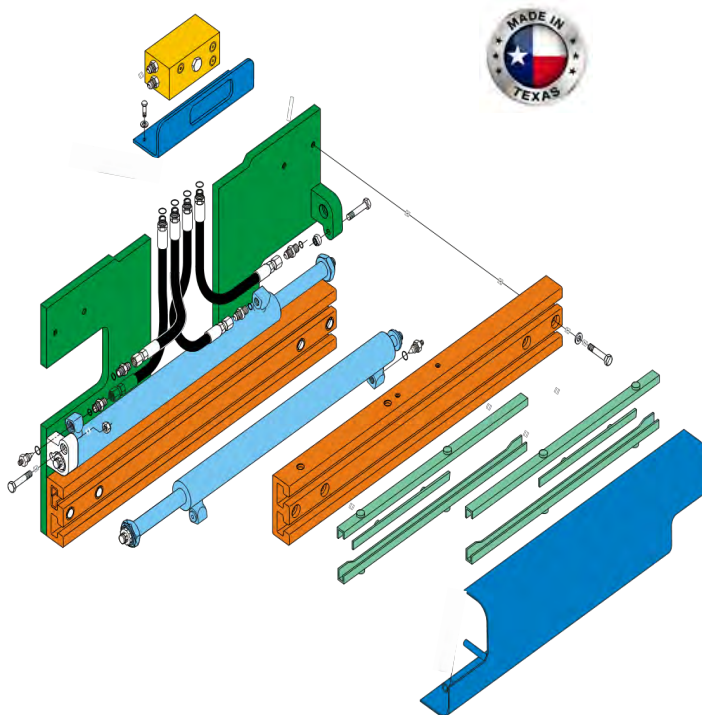


Sideshifting: 2 hydraulic functions required
Non-sideshifting: 1 hydraulic function required
Rotating: 2 hydraulic functions required
Maximum operating pressure: 2000 PSI.
Recommended flow rate:

GBC19D 6-10 GPM
GBC27D 10-14 GPM

Optional:

- Special opening ranges
- Arm sizes
- Quick change mounting
- Bolt-on arms
- Solenoid selector valve
- Relief valves
- Segmented pads



NOTE: Capacity of the truck with an attachment may be less than the attachment capacity shown here. Always consult the forklift manufacturer for actual capacity.

Available custom designed to your specifications.

PALLET FORK CLAMP SIDESHIFTING OR NON SIDESHIFTING



**CLAMPING, FORK POSITIONING AND SIDESHIFTING ATTACHMENT
FOR RECYCLE FACILITIES, SCRAP YARDS, WASTE BALES,
FOUNDRIES, STEVEDORES, MANUFACTURING, WAREHOUSING,**

- **FORK POSITIONING**

- **CLAMPING**

- **CAPACITIES FROM 3,500 LB TO 7,000 LB**

- **E-PROFILE ALUMINUM FRAME**

- **T-BAR ALLOY STEEL ARM CARRIERS**

- **SELF-ALIGNING CYLINDERS**

- **LUBE-FREE CONTOURED ARM BEARINGS**



- **Various fork lengths are available as required for the application.**

- **Many more uses than a fork positioner. This clamp can grip and lift loads using its lock valve.**

- **Slip on arms are available to handle drums, boxes, bales, bricks and blocks, etc.**

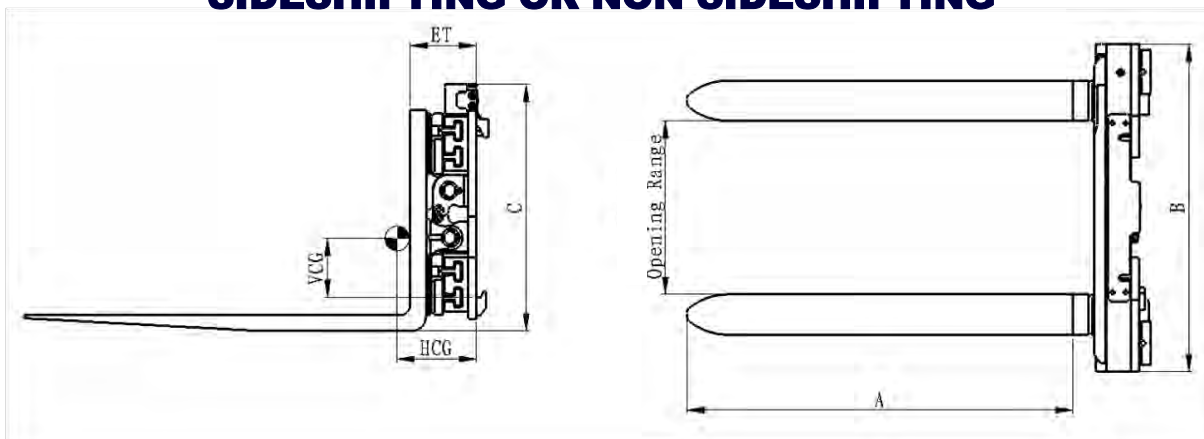
- **Forks can have drum-handling cut-outs to increase versatility.**

- **Various standard and custom opening ranges available**

- **Bolt-on mounting standard. Quick change mount optional.**

Available custom designed to your specifications.

PALLET FORK CLAMP SIDESHIFTING OR NON SIDESHIFTING

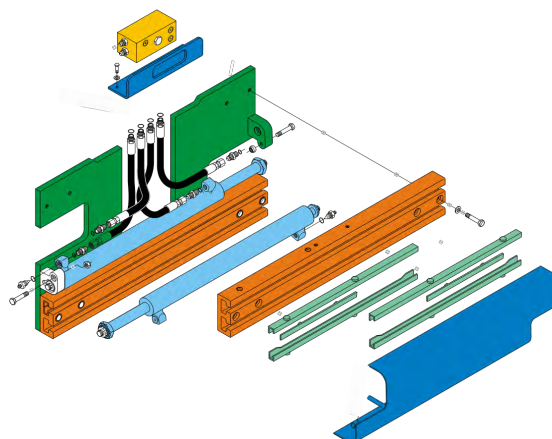


<u>Capacity</u> <u>LB @24"</u> <u>LC</u>	<u>Model</u>	<u>Class</u>	<u>Opening</u> <u>Range</u>	<u>A</u>	<u>B</u>	<u>C</u>	<u>VCG</u>	<u>Weight</u>	<u>AET</u>	<u>HCG</u>
3500	GA19D-FCS-01A	II	16.1 - 65.3	36	37	28.7	7.28	649	7.1	6.6
3500	GA19D-FCS-02A	II	16.1 - 65.3	42	37	28.7	6.9	673	7.1	7.8
3500	GA19D-FCS-03A	II	16.1 - 65.3	48	37	28.7	6.7	722	7.1	9.1
5000	GA20D-FCS-01A	II	18.3 - 71.2	36	40	28.7	8.5	882	8.2	6.8
5000	GA20D-FCS-01B	III	18.3 - 71.2	36	40	28.7	8.4	928	8.2	6.6
5000	GA20D-FCS-02A	II	18.3 - 71.2	42	40	28.7	7.8	924	8.2	8
5000	GA20D-FCS-02B	III	18.3 - 71.2	42	40	28.7	8	964	8.5	7.9
5000	GA20D-FCS-03A	II	18.3 - 71.2	48	40	28.7	7.6	957	8.2	8.9
5000	GA20D-FCS-03B	III	18.3 - 71.2	48	40	28.7	7.5	999	8.5	8.7
7000	GA30D-FCS-01B	III	16.6 - 77	48	48	32.28	14.1	1515	9.6	8.3
7000	GA20D-FCS-01C	IV	16.6 - 77	48	48	33.5	12	1515	9.6	8.3

Sideshifting: 2 hydraulic functions required
Non-sideshifting: 1 hydraulic function required
Maximum operating pressure: 2000 PSI.
Recommended flow rate:
 GA19D & GA20 8-12 GPM
 GA30D 8-14 GPM

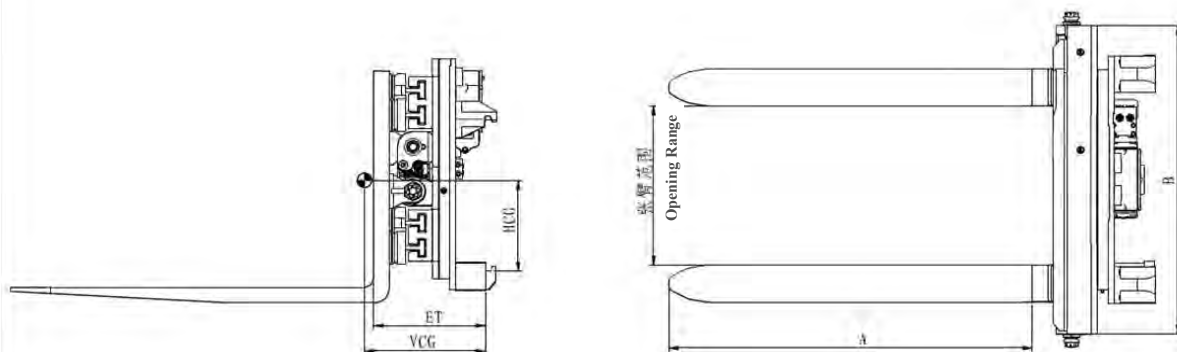
Optional:

- Special opening ranges
- Fork sizes
- Quick change mounting
- Bolt-on forks
- Solenoid selector valve
- Pressure relief valve



Available custom designed to your specifications.

ROTATING PALLET FORK CLAMP



Capacity @ 24 in. LC	Catalog Order No.	Class	Opening Range	Fork Length Size	Frame Width	VCG	Weight	AET	HCG
3500	GA19D-FCR-01A	II	16.1-65.3	36	37	11	1235	11.3	7.4
3500	GA19D-FCR-02A	II	16.1-65.3	42	37	10.8	1275	11.3	8.4
3500	GA19D-FCR-03A	II	16.1-65.3	48	37	10.4	1315	11.3	9.1
5000	GA20D-FCR-01A	II	17.3-70.3	42	40	10.9	1510	12	8.8
5000	GA20D-FCR-01B	III	17.3-70.3	42	40	10.9	1550	13.6	10.3
5000	GA20D-FCR-02A	II	17.3-70.3	48	40	10.8	1530	12	9.8
5000	GA20D-FCR-02B	III	17.3-70.3	48	40	10.8	1570	13.6	11.3
7000	GA30D-FCR-01B	III	16.6-77	48	48	12.8	2200	13.8	9.3
7000	GA20D-FCR-01C	IV	16.6-77	48	48	10	2380	16.2	10.2

Rotating & clamping: 2 hydraulic functions required

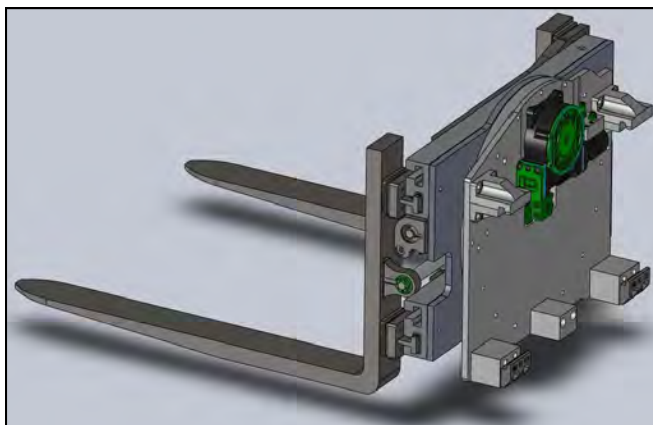
Maximum operating pressure: 2000 PSI.

Recommended flow rate:

GA19D & GA20D 8-12 GPM
GA30D 8-14 GPM

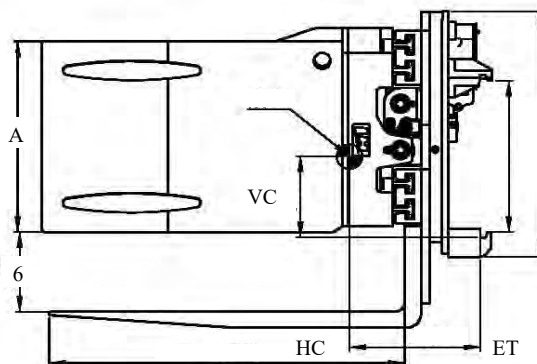
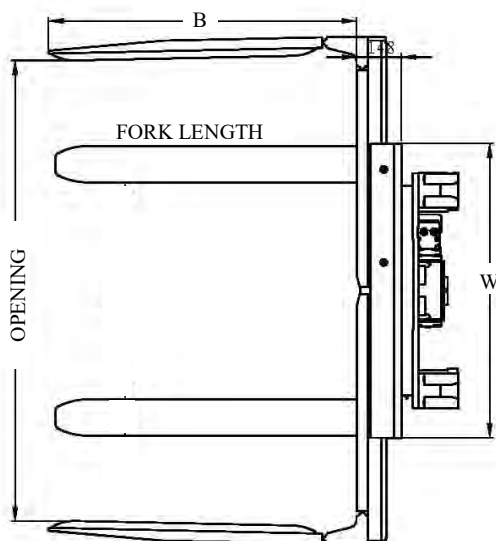
Optional:

- Special opening ranges
- Fork sizes
- Quick change mounting
- Bolt-on forks
- Solenoid selector valve
- Pressure relief valve
- Slip-on contact pads
- Drum forks
- Tire forks



Available custom designed to your specifications.

GAYLORD CLAMPS



Capacity@ 24" LC	Model	Class	Fork OTO	Opening Range	A	B	FRAME W	Arm Thick	VCG	WT	ET	HCG
3500	GA20D-GFR-01A	II	34.5	24-64	24	36	40	2.8	8.7	1640	14.3	10.6
3500	GA20D-GFR-01B	III	34.5	24-64	24	42	40	2.8	8.7	1750	14.3	11.3
5000	GA20D-GFR-02A	II	34.5	24-64	24	44	40	2.8	8.7	2310	14.8	9.7
5000	GA20D-GFR-02B	III	34.5	24-64	24	44	40	2.8	8.7	2340	14.8	9.8

Rotate & Clamp: 2 hydraulic functions required
Maximum operating psi: 2000 PSI

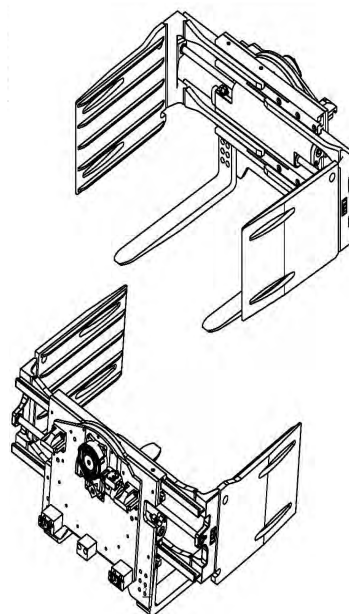
Recommended flow rate:
8-12 GPM

Optional:

- Special opening ranges
- Arm sizes
- Quick change mounting
- Solenoid selector valve
- Relief valve



- Forks assembly bolted to faceplate.
- Class II or class III mountings.
- Hydraulic lock valves hold pressure against the load.
- E-profile, bushed aluminum frame for durability and strength.
- Various openings and arm lengths available.
- Various fork sizes available
- Arms are rubber covered. Steel arms available, no rubber.



Available custom designed to your specifications.

BLOCK AND BUILDING MATERIALS CLAMP



Swivel arms are pin mounted.
Contact pads align to the stone
blocks .



BLOCK AND BUILDING MATERIALS CLAMP

Capacity@ 24" LC	Model	Class	OAH Frame	Opening Range	Arm Height	Arm Length	Frame Width	Arm Thick	VCG	WT / LB	ET	HCG
5000	GA30D-CKS-01A	II	28	12-60	5	44	40	8	8.7	1100	5.7	8.7
5000	GA30D-CKS-01B	III	28	12-60	5	44	40	8	8.7	1100	6	8.7
5000	GA30D-CKS-02A	II	28	12-60	9.5	44	40	8	8.7	1210	5.7	8.7
5000	GA30D-CKS-02B	III	28	12-60	9.5	44	40	8	8.7	1210	6	8.7

Sideshifting: 2 hydraulic
functions required
Non-sideshifting: 1 hydraulic
function required
Maximum operating pressure:
2000 PSI.
Recommended flow rate:
8-12 GPM

Optional:

- Special opening ranges
- Arm sizes
- Quick change mounting
- Solenoid selector valve

- Forks are 48 inches long.
- Class II or class III mountings.
- Sideshifting or non-sideshifting,
- Hydraulic lock valves hold pressure
against the load.
- E-profile, bushed aluminum frame for
durability and strength.
- Various openings and arm lengths
available.

NOTE: Capacity of the truck with an attachment may be less than the attachment capacity shown
here. Always consult the forklift manufacturer for actual capacity.



Available custom designed to your specifications.

DRUM ATTACHMENTS

DRUM LIFTERS

SINGLE DRUM

MODEL	Capacity	Number	Mounting	Weight
DL-1	750	1	Fork	170



MODEL	Capacity	Number	Mounting	Weight
DL-2	1500	2	Fork	250

TWO DRUMS



DRUM LIFTERS

DL400CL Drum Lifter automatically grips various common types of closed head or top-opened drums in the horizontal position. Use it to pick and place drums in storage racks. The Crane Blade CBL model shown and the Crane Hook CH model are available in this catalog but not included with the DL400. They must be ordered separately.

DL400C Drum Lifter can easily move rimmed steel, plastic or fiber drums. Use it to pick or place drums on pallets or into storage stacks and for shipping receive-

Model	No. Drums	WT-LB	CAPACITY
DL400C	1	11	880 LB
DL400CL	1	18	880 LB



DL400



DL400C

DRUM ATTACHMENTS

DRUM HANDLERS

SINGLE DRUM

MODEL	Capacity	Number Drums	Mounting	Weight
BG-1	1100	1	Fork	150

BG models are for steel-rimmed drums.

BG models will handle plastic drums with steel rim rings and straight sides.

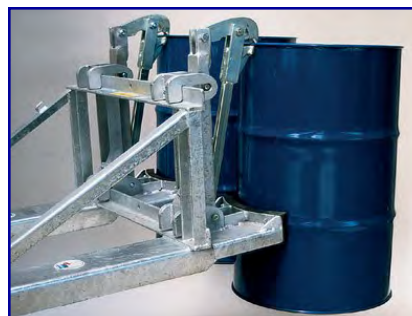


TWO DRUM

BG-2	2200	1	Fork	215
------	------	---	------	-----

BG MODELS ARE VERY ECONOMICAL HANDLERS DESIGNED FOR WAREHOUSE OR FACTORY USE.

All models include safety chain and snap hook.



DRUM ROTATOR

DR-1	880	1	Fork	270
------	-----	---	------	-----



Fork-Co's drum rotator is operated by a manually powered reducer assembly. The gearing ratio allows drums to remain in the partially rotated position without free-wheeling on the drive. The belly band opens on hinges and locks closed using a lever-lock similar to a propane tank strap.

This model is used for 55 gallon steel drums only.

Available custom designed to your specifications.

SELF-CLAMPING FORK JIB

**CAM-LOCKS TO FORK BLADES. THE HEAVIER THE LOAD, THE HIGHER THE CLAMPING FORCE.
NO SCREWS OR HAND LEVERS TO TURN.**

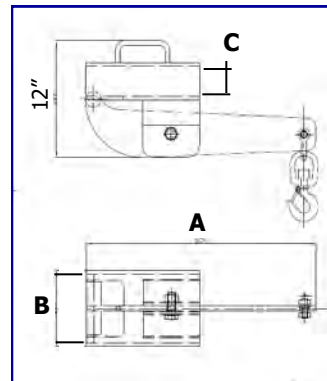
**Mounted on single fork.
Self-fastening by clamping to fork blade.
Includes safety swivel cargo hook and shackle.
Galvanized finish.**



Model	A	B	C	WT-LB	CAPACITY
CLC1500	22.5"	7"	3.15"	53	3,300 LB

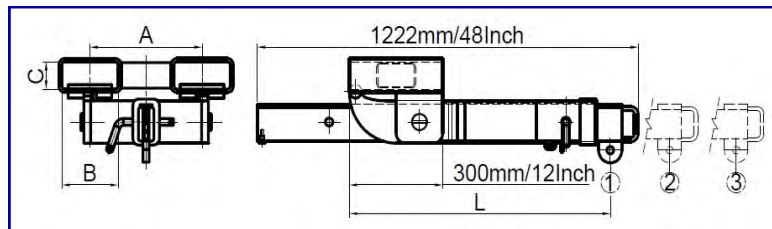
**Mounted on both forks.
Self-fastening by clamping to fork blades.
Includes safety swivel cargo hook and shackle.
Galvanized finish.**

Hook position is dependent on jib's location on fork blades. Check with forklift maker for actual capacity rating at these load centers.



Model	A	B	C	WT
CLC3000	14.18"	7"	3.15"	163

POSITION	EXTENSION INCHES	CAPACITY SWL-LB
1	46	6,600
2	61	4,400
3	76	3,300

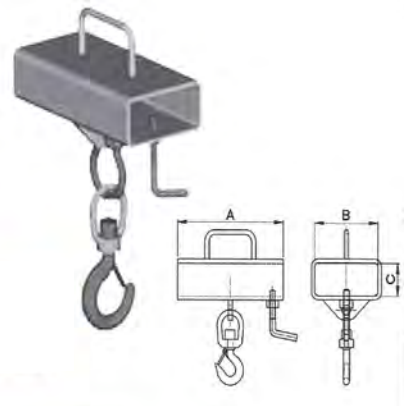


CRANE HOOK

Mounted on single fork,
secured by a locking
screw.

Includes safety swivel
cargo hook and shackle.

Galvanized finish.



MODEL	A	B	C	WT	CAPACITY
CH1000	12"	7"	3.15"	35	2,200 LB

CRANE BLADE

- Available in three capacities
- Mounted on forks and secured by friction pads and chain.
- Includes safety swivel cargo hook and shackle.
- Galvanized finish.



MODEL	A	B	C	WT	CAPACITY
CBL2000	16"	8.6"	3.6"	22	4,400 LB
CBL3000	24.2"	6.5"	2.8"	37.5	6,600 LB
CBL4500	24.2"	6.5"	2.8"	62	10,000 LB

CRANE BOOMS, TELESCOPIC EXTENSION

MEDIUM DUTY-RATED FORK CRANE JIB FOR MOST APPLICATIONS

HOOK POINTS MEASURED FROM REAR EDGE OF FORK POCKETS

INCLUDED:

- CARRIAGE SAFETY CHAIN WITH SNAP HOOK.
- 5-TON SAFETY SWIVEL CARGO HOOK AND SHACKLE, LYNCH PIN. JIB LOCKING PIN



CRANE JIB , SHORT, MODEL FJCS45

FORK POCKET SIZE	2.75" x 7.25"
CLOSED LENGTH TO HOOK	46"
MAX OPEN TO HOOK	76"
MAX CAPACITY HOOK POINT	26"
FORK SPACING, MAX OTO	18.5"
WEIGHT	230 LB

HOOK CENTER INCHES	CAPACITY LB
26	10,000
46	6380
62	2860
76	1650
WEIGHT	230 LB

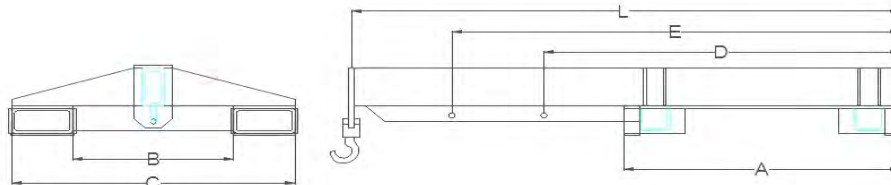


CRANE JIB, LONG, MODEL FJCL45

FORK POCKET SIZE	2.75" x 7.25"
CLOSED LENGTH TO HOOK	78"
MAX OPEN TO HOOK	138"
MAX CAPACITY HOOK POINT	36"
FORK SPACING, MAX OTO	18.5"
WEIGHT	308 LB

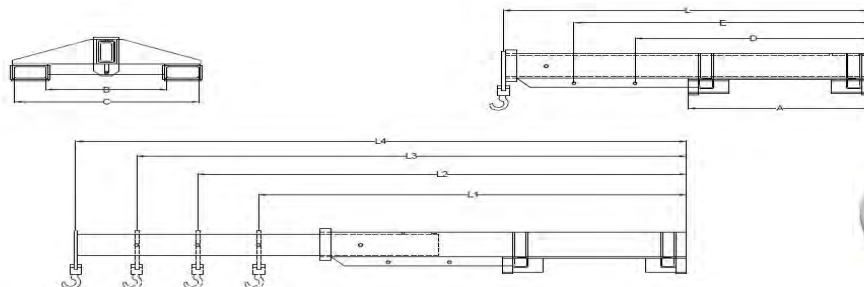
HOOK CENTER INCHES	CAPACITY LB
36	10,000
78	2860
92	1650
108	1230
124	840
138	450
WEIGHT	308

CRANE JIB, FORK-MOUNTED



MODEL NUMBER	CAP @ 72" LC	POCKET ID	POCKET SPACING (C / B)	HOOK POINTS L.E.D	WEIGHT LB	AET	HCG	VC G	POCKET LENGTH IN. (A)
FCJL-50-72	5,000	3.25 X 7.25	21.75 / 36.63	48/60/72	269	0	27	7	37
FCJL-75-72	7,500	3.25 X 7.25	21.75 / 36.63	48/60/72	301	0	29.5	7	37

TELESCOPING CRANE JIB, FORK-MOUNTED



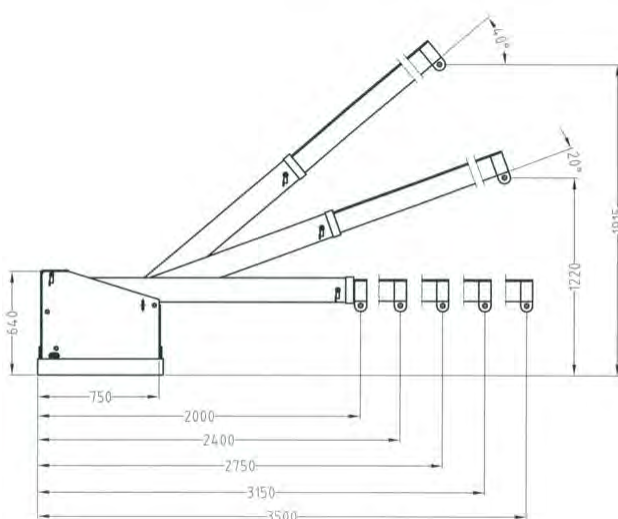
MODEL NUMBER	CAP @ 72" / 112" LC	POCKET ID (IN)	POCKET SPREAD (C / B)	HOOK POINTS L,E,D L1, L2, L3, L4	WEIGHT LB	LOST LOAD IN. (LLC)	HCG Ret. / Ext.	VC IN.	POCKET LENGTH IN. (A)
FCJL-50-72-112	5,000 @ 72 2,000 @ 112	3.25 X 7.25	21.75 / 36.63	48/60/72/ 84/96/108/112	433	0	29/49	8.5	37
FCJL-75-72-112	7,500 @ 72 3,000 @ 112	3.25 X 7.25	21.75 / 36.63	48/60/72/ 84/96/108/112	475	0	31/51	8.5	37

CRANE BOOMS, TELESCOPIC EXTENSION

TILT CRANE JIB

MODEL NO TJCL45 (LONG)

HOOK CENTER INCHES	CAPACITY LB
30	10000
80	7250
96	5500
110	2850
126	1650
132	1050
WEIGHT	410



- 5-TON SWIVEL SAFETY HOOK
- FORK POCKET: 2.75 " x 7.25"
- POCKET CENTERS @ 12.75"
- POCKET LENGTH: 30"
- TILT ANGLES: 20 ° AND 40°
- CARRIAGE SAFETY CHAIN AND SNAP HOOK INCLUDED
- JIB LOCKING PIN INCLUDED
- REINFORCED FORK POCKETS

Available custom designed to your specifications.



CRANE HOOK

A heavy duty, high capacity lifting hook and frame assembly custom designed for the forklift.

Variable lengths and fork spacing, fork section sizes available.

These are customized to the job at hand and built to meet the application parameters.

Contact Fork-Co USA for prices and specifications.

HIGH-MOUNT FORK JIB

Capacities range from 3500 LB through 10,000 LB.

Lengths are variable according to need. Built to spec.

Elevation above forks is designed as required.

Can be built to be open between fork pockets.



QUICK-ATTACH TRUSS JIBS

Designed for quick install and removal on forklifts, loaders and backhoes. Various lengths and capacities available up to 12,000 LB at 20 foot length. Coupling specifications required. Fork-mounted also available.



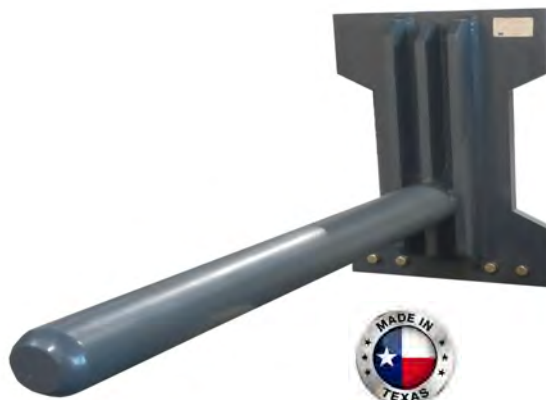
Available custom designed to your specifications.

COIL RAMS FOR HOOK-TYPE CARRIAGES

Tough alloy steel in precision design and manufacture make the Fork-co brand a durable, rugged coil ram.

We can design to fit any forklift with a hook-type carriage. Back plate is locked at bottom for positive retention on the carriage

Boom centerline from ground is variable according to application requirements.



Coil Rams with Hook Type Mounting

Model Number	Capacity LBS. at Load Center	Mounting	Usable Length	Diameter	ET	HCG	VCG	Weight lbs.
CRBN-36-100	10,000 @ 24"	Class III	36"	8"	3.0"	9.9"	Note A	430
CRBN-48-100	10,000 @ 24"	Class III	48"	8"	3.0"	14.3"	Note A	485
CRBN-60-100	8,000 @ 30"	Class III	60"	8"	3.0"	18.9"	Note A	545
CRCN-36-165	16,500 @ 24"	Class IV	36"	8"	3.5"	10.1"	Note A	450
CRCN-48-165	16,500 @ 24"	Class IV	48"	8"	3.5"	14.5"	Note A	505
CRCN-60-165	13,200 @ 30"	Class IV	60"	8"	3.5"	19.2"	Note A	565
CRDN-36-200	20,000 @ 24"	Class V	36"	10"	4"	9.3"	Note A	870
CRDN-48-200	20,000 @ 24"	Class V	48"	10"	4"	13.3"	Note A	955
CRDN-60-200	20,000 @ 30"	Class V	60"	10"	4"	17.6"	Note A	1050

NOTE A: Vertical Center of Gravity will be determined by the height of the coil ram from the ground. This distance is different for each application and must be specified at the time of order.



Available custom designed to your specifications.

COIL RAMS FOR PIN-TYPE CARRIAGES

Tough alloy steel in precision design and manufacture make this a durable, rugged coil ram.

We can design to fit any forklift with pin-type carriage. Back plate is free floating at the bottom for easy alignment during pick and place.

Boom centerline from ground is variable according to application requirements.

Higher capacities are available



Coil Rams with Pin Type Mounting

Model Number	Capacity LBS. at Load Center	Mounting	Usable Length	Diameter	ET	HCG	VCG	Weight lbs.
CRPN-36-100	10,000 @ 24"	Pin Type	36"	8"	3.0"	9.9"	Note A	430
CRPN-48-100	10,000 @ 24"	Pin Type	48"	8"	3.0"	14.3"	Note A	485
CRPN-60-100	10,000 @ 30"	Pin Type	60"	8"	3.0"	18.9"	Note A	545
CRPN-36-200	20,000 @ 24"	Pin Type	36"	10"	4"	9.3"	Note A	870
CRPN-48-200	20,000 @ 24"	Pin Type	48"	10"	4"	13.3"	Note A	955
CRPN-60-200	20,000 @ 30"	Pin Type	60"	10"	4"	17.6"	Note A	1050
CRPN-48-360	36,000 @ 24"	Pin Type	48"	10"	4.5"	12.7"	Note A	1510
CRPN-60-360	36,000 @ 30"	Pin Type	60"	10"	4.5"	16.7"	Note A	1645
CRPN-72-360	36,000 @ 36"	Pin Type	72"	10"	4.5"	21.0"	Note A	1785
CRPN-48-500	50,000 @ 24"	Pin Type	48"	12"	7.0"	9.9"	Note A	3125
CRPN-60-500	50,000 @ 30"	Pin Type	60"	12"	7.0"	12.8"	Note A	3290
CRPN-72-500	50,000 @ 36"	Pin Type	72"	12"	7.0"	16.2"	Note A	3460
CRPN-48-650	65,000 @ 24"	Pin Type	48"	12"	8.5"	8.5"	Note A	5710
CRPN-60-650	65,000 @ 30"	Pin Type	60"	12"	8.5"	10.6"	Note A	5925
CRPN-72-650	65,000 @ 36"	Pin Type	72"	12"	8.5"	13.0"	Note A	6140
CRPN-96-650	65,000 @ 48"	Pin Type	96"	12"	8.5"	18.5"	Note A	6565

NOTE A: Vertical Center of Gravity will be determined by the height of the coil ram from the ground. This distance is different for each application and must be specified at the time of order.

Available custom designed to your specifications.

FORK-MOUNT COIL RAM, UNDERSLUNG STYLE



SHOWN: 30,000 LB CAPACITY X 72 INCH LONG, 12" DIAMETER

FORK-MOUNT COIL RAMS, UNDERSLUNG

These are very heavy duty rams designed for fast mount, for the occasional coil handler, who does not wish to dedicate a forklift to that purpose.

It locks to the carriage using locking pins.

When dismounted, it is free-standing. No storage rack is needed.

Various lengths and appropriate diameters are available.

Built to order, customized to the application.

Coil dimensions required are:

**WEIGHT:
OD OF COIL:
WIDTH OF COIL:
ID OF CORE:**



Available custom designed to your specifications.

COIL HANDLING FORK SLEEVES



Coil sleeves are quick mount onto the forks and pinned behind the fork heel. They are used to handle coiled material such as steel, aluminum, wire, stainless and plastics. These are built to match the fork width and the coil inside diameter. Lengths are as required per the coil width and fork length.

For sensitive surfaces such as coated or stainless steel, we also produce these with protective poly coverings and UHMW tip bumper. These are easily replaceable as needed.



Available custom designed to your specifications.

CARPET POLES



- **FORK-CO USA's Carpet Poles are high tensile stress-proof bar , easy enter taper tip.**
- **Class II and Class III carriage mountings available.**
- **Fork-Mounted Options available.**

MODEL	CAPACITY @ LC	CLASS	LENGTH	DIA.
RPC70-3050	1400lbs @ 60"	II	10 FT	3"
RPC70-3650	1200lbs @ 72"	II	12 FT	3"
RPC75-3050	2000lbs @ 60"	III	10 FT	3"
RPC75-3650	1750lbs @ 72"	III	12 FT	3"
RPC75-1220	5000lbs @ 24"	III	4 FT	3"
RPC75-1525	4200lbs @ 30"	III	5 FT	3"
RPC75-1830	3500lbs @ 36"	III	6 FT	3"

Available custom designed to your specifications.

FORK MOUNTED HYDRAULIC BUCKET

Makes any forklift a front end loader. Fast and easy install and remove.



Various widths and capacities available, consult Trading Point for details.

- **Construction sites**
- **Recycle yards**
- **Landscapers**
- **Nurseries**
- **Golf courses**
- **Municipalities**
- **Plant maintenance**
- **Rental yards**
- **Snow removal and clearing**
- **Parking lot maintenance**
- **Feed lots**
- **Farmers**

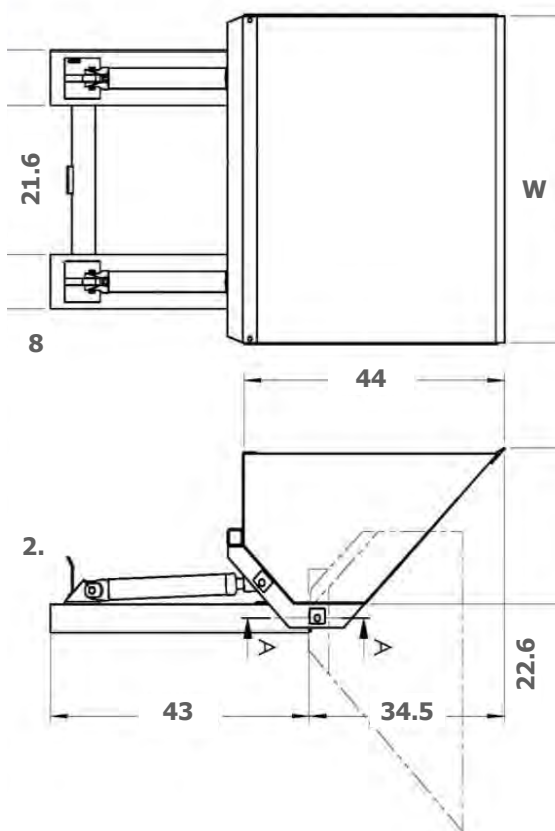
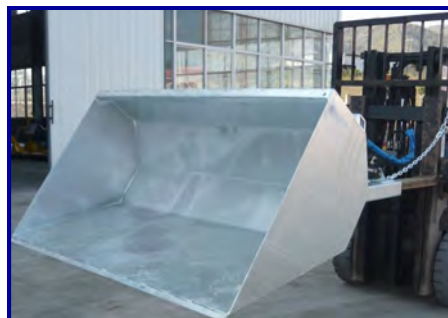


Who can't use a front end bucket?



Available custom designed to your specifications.

FORK MOUNTED HYDRAULIC BUCKET



- **DBHS HYDRAULIC BUCKET... A quick -detach occasional use tool for handling all kinds of bulk materials.**
- **Full hydraulic control backwards and forward to 45 degree dump angle, plus the tilt angle of the forklift mast.**
- **Hardened steel cutting edge welded to the bucket leading edge.**
- **Maximum safe working load of 2,200 LB.**
- **Does not include hydraulic hoses or adapters to connect to the forklift supply. However, these are available on request along with available quick couple hydraulic connectors.**
- **Other bucket widths are available on request.**
- **Painted finish standard. Galvanizing is optional at additional charge.**
- **Includes security chain and hook to secure to forklift.**
- **Hose termination bracket included.**

MODEL	W	MAX LOAD	WT	CAPACITY
DBHS-12	48"	2200 LB	664	.65 CU. YD
DBHS-16	63"	2200 LB	745	.85 CU. YD
DBHS-20	79"	2200 LB	824	1 CU. YD



Available custom designed to your specifications.

FORK-MOUNTED TRAILER SPOTTER

Move trailers and chassis around the yard with ease. No need for a tugger with Fork-Co's TRAILER SPOTTER.



EASY AND SECURE INSTALLATION

ACCEPTS FULL SIZE FIFTH WHEEL PINS



Fork-Mounted trailer spotter is a fork mounted attachment , secured to the forklift forks, used to move trailers.

The Spotter is equipped with a 2" receiver for standard ball-type hitches. It also has a fifth wheel pin receiver.

The fork pockets are locked by pins behind the fork heels.

Fork-Co's spotter is designed to accept tongue weights up to 5,000 LB.

Fork pocket length is 48", fork out to out is 30" with 32" overall width.

Accepts forks up to 2 inches thick and 5 inches wide.

The attachment weighs 216 LB.

BALL HITCH IS NOT INCLUDED



Available custom designed to your specifications.

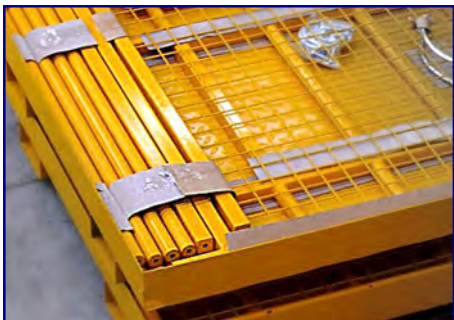
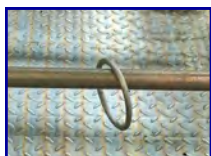
FORK MOUNTED WORK PLATFORM

MODEL **W x L x H**

WB 1010 **45.5 X 42.5 x 78**

OPTIONS:

- **TOOLBOX**
- **STRIP LIGHT BULB HOLDER**
- **FLOOR MAT ON REQUEST**



DOOR IS SPRING-LOADED AND SELF LOCKING WITH GRAVITY LATCH.

- Fits standard forks up to 2 X 6 section.
- Guard rail capacity is over 300 LB
- Complies with OSHA/ANSI requirements
- Personnel mast screen standard
- Tool box is hook-on mount, removable
- Pin-locks fix pockets to forks
- Two ring-type safety harness lanyard fastening points provided
- Slip-resistant diamond pattern floor plate standard.
- 4 in. toe plate standard
- Door can be assembled to open either inward or outward
- Enamel finish



550 LB Capacity

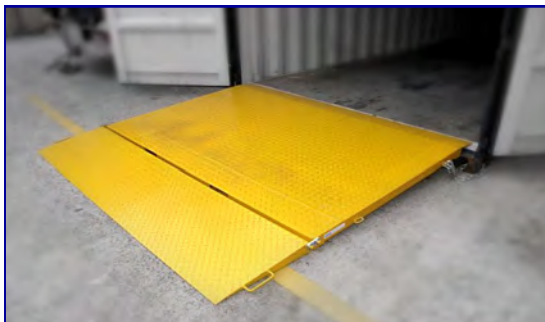
Weight: 242 LB

Rail Height: 39"

Fork Pockets: 31.5" OTO

**Available only in
zinc plating**

CONTAINER RAMP



The CR6 Container Ramp allows handy forklift access to ground-level containers. Popular for storage, forklifts must enter to move goods. The CR6 allows easy entry.

CR6 folds to expose fork pockets for transporting the ramp. One man can remove the ramp or install it quickly. Once removed, the container doors can be shut and secured.

Customer opportunities would likely be container aftermarket and repair yards who sell or rent containers for storage and big box retailers using containers for seasonal storage.

Larger models are available.

**MODEL CR6
14,500 LB Capacity
84 inches width
80 inches long**

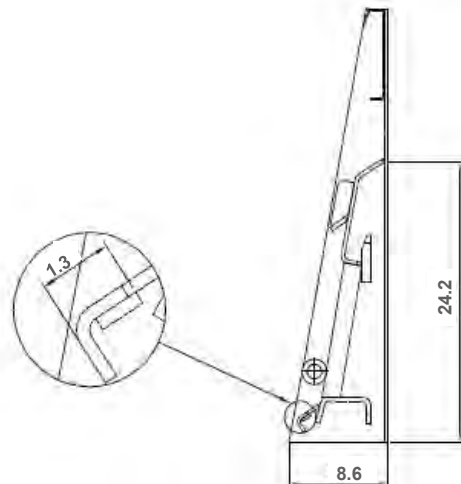
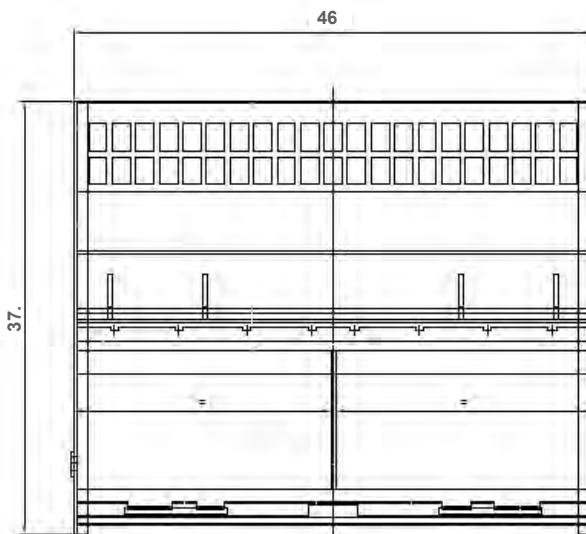


SKID STEER CARRIAGES



SKID STEER carriage to fit any skid steer loader. The universal quick hitch mounting is standard, or you can add your own. Any mounting can be factory added.

- 46 inch wide, ITA Class II fork bars
- 4,000 LB capacity @ 24 inch LC



Available custom designed to your specifications.

BD-12 BIN TIPPER



For MacroBin 24-S, 24-FV,
16-S & 16-FV bins or similar.

Single hydraulic function.

Quick attachable fork
mount. Heel locking pins
included.

Adjustable top bin retainer
for handling a broad range
of bins sizes.

Forward dump angle: 142
degrees.

Fork pocket size: 2.75 x
5.5 in.

Pocket spacing: 24" on cen-
ters

Out to out over forks: 30 in.

Inside cylinder anchors:
6.25 in.

Maximum Hyd. Pressure:
2,350 PSI

MAXIMUM CAPACITY:
2,400 LB
AT
LOAD CENTER: 24 INCHES



Available custom designed to your specifications.

HOOKS AND LATCHES FOR FORKS

UPPER HOOKS	CAPACITY	WIDTH	WT	CLASS
4000002298	5,500 LB/PR	4"	1	ITA II
4000002299	10,000 LB/PR	5"	3.1	ITA III
4000002300	17,500 LB/PR	6"	7.7	ITA IV
LOWER HOOKS	CAPACITY	WIDTH	WT	CLASS
4000002301		3.5	0.5	ITA II
4000002302		4"	1.5	ITA III
4000002303		4.5"	2.8	ITA IV



LATCH SETS	CLASS
4000002304	ITA II
4000002305	ITA III
4000002306	ITA IV



SAFETY CARGO HOOKS

Included with all crane jibs and fork hooks.

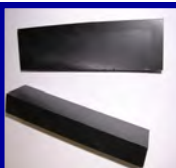
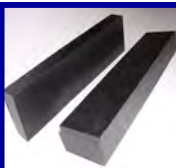
Additional hooks may be ordered.

Available custom designed to your specifications.

SIDESHIFT BEARINGS - (REPLACE CASCADE®)

FORK-CO's SIDESHIFT BEARINGS ARE AFTERMARKET DIRECT-REPLACEMENT PARTS (NOT GENUINE CASCADE® PARTS) MADE TO PRE-CISE SPECIFICATIONS.

FORK-CO's high quality bearings fit Cascade® sideshifts, push-pulls, single doubles and other attachments.



Call for pricing . Save Money. Increase revenue

No more high OEM prices for sideshift bearings

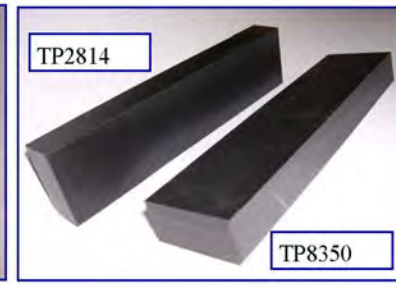
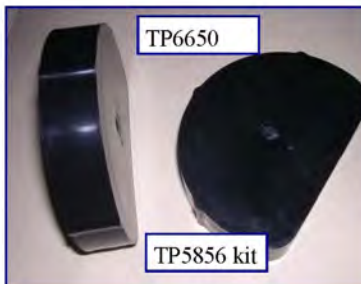
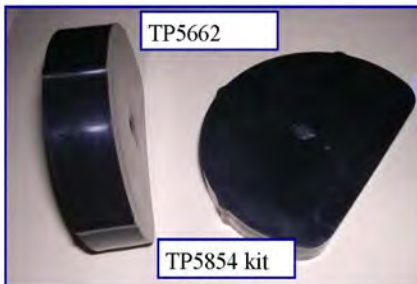
OEM PART NO.	FORK-CO PART #	DESCRIPTION
204212	TP4212	Bearing
207209	TP7209	Bearing
208350	TP8350	Bearing
218360	TP8360	Upper Bearing
218361	TP8361	Lower Bearing W/ Adhesive
228782	TP8782	Upper Bearing
671423	TP1423	Kit, Upper Bearing
672022	TP2022	Kit, Upper Bearing
675662	TP5662	Lower Bearing Puck Small
675854	TP5854	Kit Lower Bearing
675856	TP5856	Kit Lower Bearing
676650	TP6650	Lower Bearing Puck Large
682814	TP2814	Bearing
6000647	TP00647	Lower Bearings w/adhesive
6000719	TP00719	Lower Bearings w/Lugs
6033487	TP33487	Kit Lower Bearing
204187	TP4187	Upper Bearing
6020486	TP20486	Kit, Upper Bearing
671165	TP1165	Upper Bearing W/2 Grease Fittings
672018	TP2018	Upper Bearing W/2 Grease Fittings

All parts in stock in our Alvin, TX warehouse.

Shipping charges additional.

SIDESHIFT BEARINGS

SIDESHIFTER BEARINGS BY FORK-CO CAN BE IDENTIFIED USING THIS SHEET.



CLAMP ARM SLIDE BEARINGS

FORK-CO USA CLAMP ARM SLIDE BEARINGS REPLACE CASCADE® BRAND PARTS.

Our slides are made of high strength composite materials containing at least 18% fiberglass This mix provides tough, durable bearings with extremely long wear life.

FORK-CO USA makes these parts. They are not genuine Cascade® parts.



PART NUMBER CROSS-OVER

CASCADE®

FORK-CO

**667661
667662
667663
208857
208858
667906
667907**

**TP7661
TP7662
TP7663
TP8857
TP8858
TP7906
TP7907**

These slides are high quality, dimensionally exact replacements made by Fork-Co USA. These are not genuine Cascade® brand parts.

Our customers have been repeat buyers for many years with 100% satisfaction with our products. We are proud of the quality of our aftermarket parts.

Buy better products... Pay less money... Make higher profits.

PANA-VIEW™ PANORAMIC SAFETY MIRROR **180 DEGREE VISIBILITY FIELD**



Wider viewing range alerts operators when traffic approaches

180 DEGREE PANA-VIEW™ GIVES EASY, UNOBSTRUCTED REAR & SIDE VIEW.

Improves safety and eases operator neck strain. Crescent shape reduces blind spots in the work zones.

Installation hardware available



Molded, resilient, unbreakable plastic body with a scratch-resistant, unbreakable replaceable reflector. Easy mount threaded ball & socket locks at selected angle.



Eliminates side mirrors that extend beyond the overhead guard. Blocks less forward vision than rectangular mirrors.



Improves operating safety for personnel and equipment. PANA-VIEW installs easily. Measures 9.75 inches wide and 4.75 inches high.



Shown with protective plastic cover in place

“AT-A-GLANCE” protection for personnel and vehicle traffic in the back-up & tail-swing zones